

Uşşak İlâhi

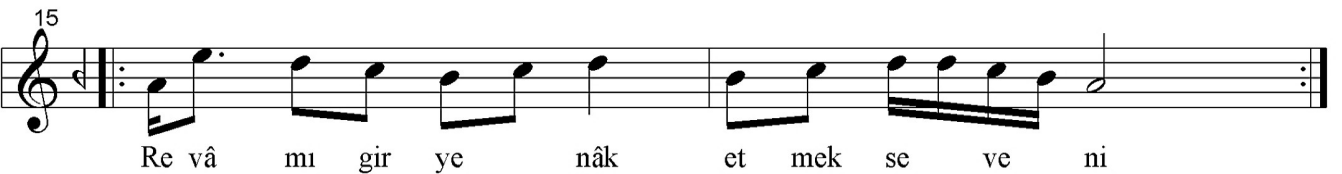
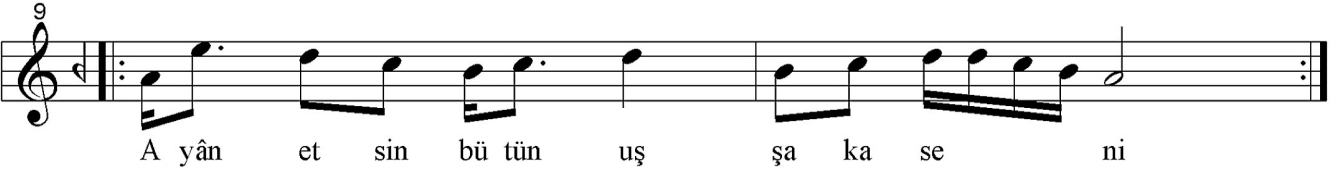
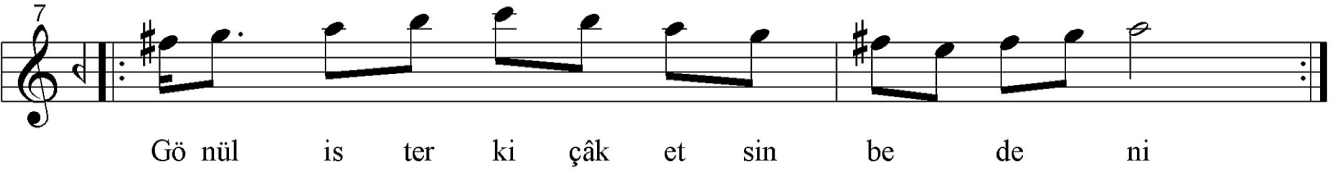
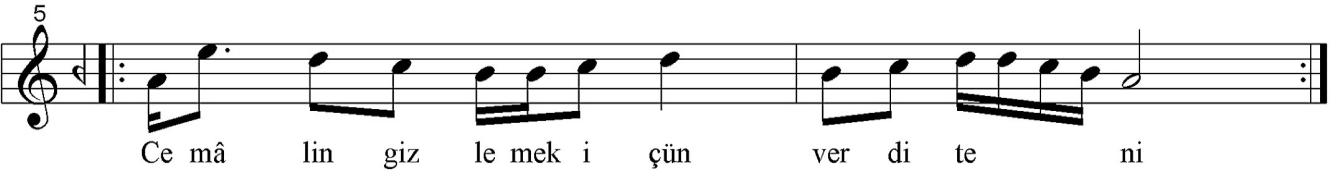
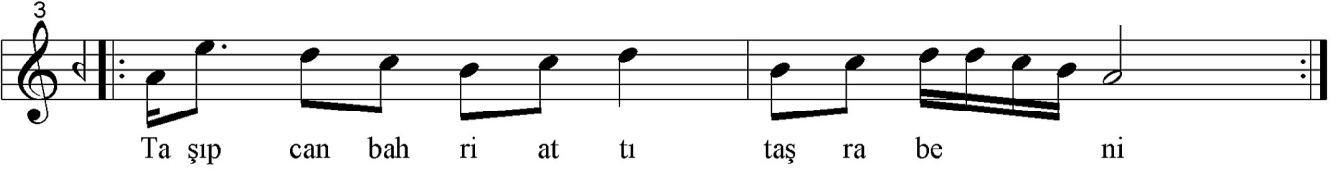
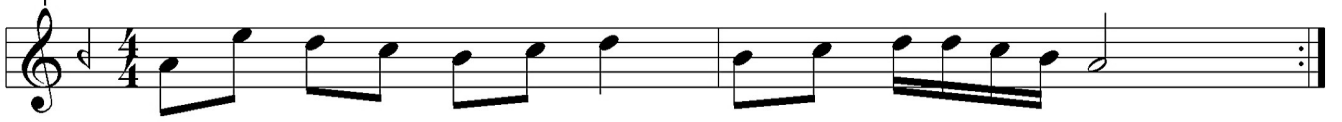
"Aşıkın Tahassürleri"

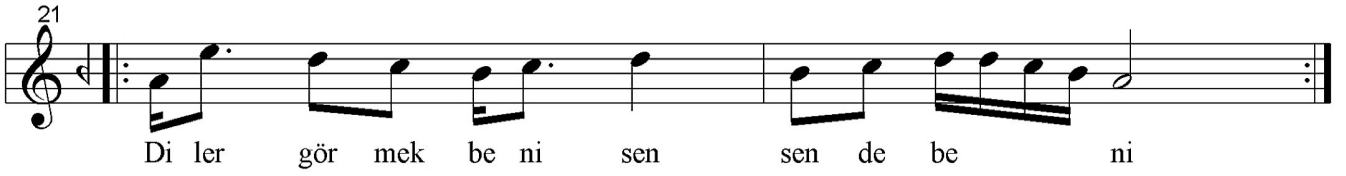
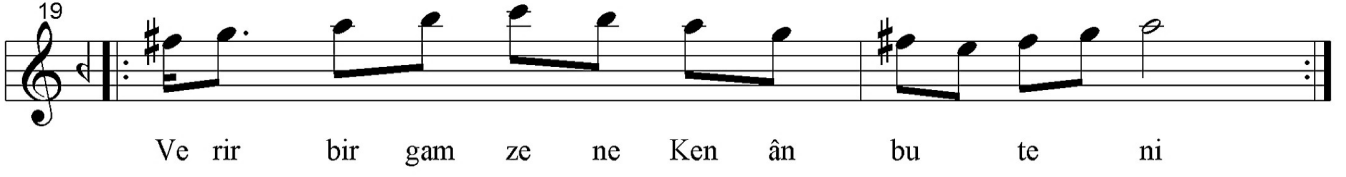
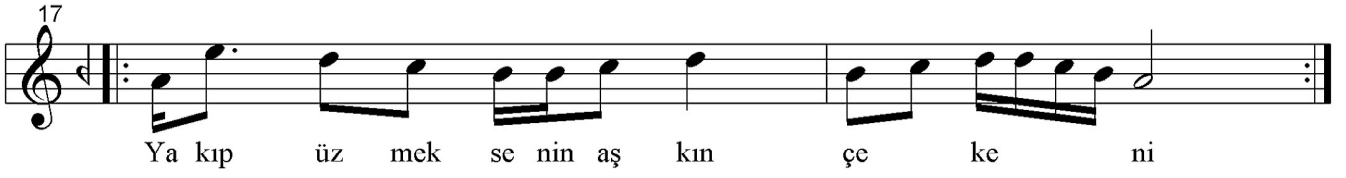
Güfte : Ken'ân Rifâi

Beste : Ahmet Kadri Rızeli

Usul : Sofyan

♩ = 100





*Taşıp can bahri attı taşra beni
Cemâlin gizlemekçün verdi teni*

*Gönül ister ki çâk etsin bedeni
Ayân etsin bütün uşşâka seni*

*Revâ mı girye-nâk etmek seveni
Yakıp üzmek senin aşkın çekeni*

*Verir bir gamzene Ken'ân bu teni
Diler görmek beni sen sende beni*