

## SÖZİN AK AYIN-I ŞERİFİ

Düyek

Zekâi Dede Efendi

Ya . . . sa kı yel mü de . . .  
 . . . me fi hay ye a les . sa lâ hey . yi hey . hey  
 . . ca . ru men . . hey . yi hek mak . bu . li men  
 im . . . lâ zü cā ce na . . . . . bi hu mey ya  
 Fe kad . ha lâ hey . yi hey hey . ca ru men . .  
 hey yi hey . mak . bu . li men Es . . . hay  
 te nil mü da . . . . me te min . tar fi kel . be hi  
 hey . . yi hey . hey . ca ru men . hey . yi hey mak  
 . . bu . li men het . . la ce lâ fū a . . . . .  
 . . . di ye min ah se nil . ci lâ hey . yi hey hey  
 . . ca ru men . . hey yi hey . mak . bu . li men  
 Te a . . lev . küll . le na . . zel . yev mi sek . . . . .

Saz  
Sâ . . . Bi ak . . . da . . . hin . . . tû . . . ha . . . mir . . . na

Saz  
ve let . . . . . ra . . . . . Te a . . . lev . in

Saz  
ne ha . . . zel . yev meî . . . . . din

Te cel . lâ . fi . hi ma . . . ter . cû . ne . çek . . . . .

Saz  
rah . . . . . El . yev . me minel . u . z . si . li . ne . si . . . . .

Saz  
mün ve sî u . . . . . dîn . . . . . El . yev . me e tal .

Saz  
hubbi a . . . . . lel . . . . . ah di ku u . . . . . dîn

ya . kav . mei . lel . as . ki e . ni . . . bu . vee . ci . . . . .

Saz  
bu . . . . . lem . ma . ke . te . bal . la . hü . â . lel . . . . .

Saz  
Râ . ki . hu . lû . . . . . dîn

Kad . sab . . . ba . ha . nal . la . hü . bi . î . . . . .

Saz  
sin . . . ve . me . lâ . . . . . mün . . . . .

kad ay yede nel i dü ve kad

tem me si ya mün

Im lā ka de han ve ha ti ya

hay ra gu lām mün saz mün

Key yes kü re na süm me a led

deh ri se lā mün

Hey hey ya ri ya ri men men

dost dost ah pi ri

men ah ah

dest gi ri men yār

yār it san me det

dost dost sul tan me

ded . . . ah . . . ah . . . süb

.. tran . . me . . ded . . guf . ran . . me . . ded

## Kinci Selâm

Evfer.

Ah . . sul . ta . . ni . me . . ni . . .

Ah . . sul ta . . ni me . . ni  
Ah men zin de se . . vem

ah . . . en der . . di . . lü can  
ah yek can ci . . se ved

can ved . . sad . me . ni . . me ni  
ved ca ni me ni

ah . . der . men . bi . . de mi  
ah me ni me ni

Tereñüm.

1 2

Devrikebir.

# Üçüncü Selâm.

Ey . yü ha . . . eh lel fe . ra . . .  
dis ik ra . . . u . . . men . . . su  
te na . . . Ved he . . . su  
min . . . ham . . . ri na . . .  
ves . . . tes me . . . u . . . na . . .  
ku . . . te na . . .  
Hu rü . . . küm . . . tas fe ru . . .  
ay . . . kan Ten ha . . . ni . . . min  
na . . . ri lui . . . lev te  
et . . . fi . . . cen . . . hi  
ley . . . lin . . . Ev ne . . . ha . . . rin . . .  
hu . . . re na . . .

*Terennüm.*

ah . . . be li yā rim

Ey ki he zar, a fe rin . dost dost bu ni ce sul  
herki bu gün ve le de " " i na nu ben

tan o lur ku li o lan ki si ler cz nim .  
yüz sü re yok sul i se bay o lur " "

husrevü ha kan o lur yâr . yâr hus re vü ha kan o lur  
bay li se sul tan o lur " " bay i se sul tan o lur  
*Terennüm*

*Ru*

hi le ke ya za i ru fil ley li fe da yar ya muni sü vah

şe ti i zel ley li he da yar in kā ne fi ra

ku na me as sub hi be da yar la Es fe re ba'



de za ke sub han e be den yā ri yār . . . .



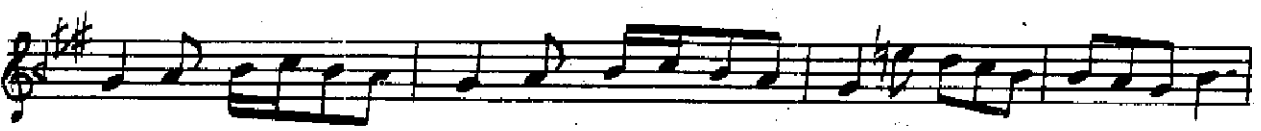
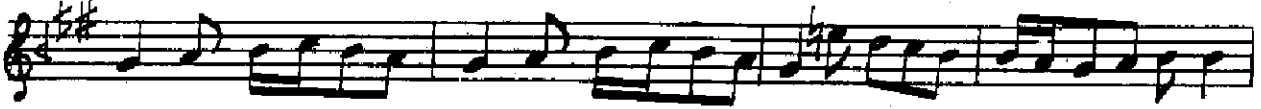
yār yā ri men yār dost . . dost . . .



dost yā ri men yār. ah yā ri men yā ri meta



dost yā ri men yā ri meta dost yā ri men uay  
Terennüm.



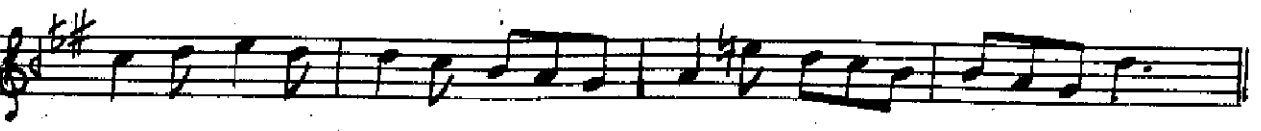
Te a li ya me de del si ves sü ru ti te al  
li ka ü vec hi ke fil hem mi fa ti kul is bah



te a li ya fe re hal hem mi fa ti kul ik fal  
si ka ü cu di ke fil fak ri mün te hel ik bal



te a li ya fe re hal hem mi fa ti kul ik fal  
si ka ü cu di ki fil fak ri mün te hel ik bal  
Terennüm.



Vec hü ke mis lül ka mer kalbü ke mis lül ha cer

ru hu ke ru hul be ka Hüs nü ke nu tul be sar

Hic rü ke ru hu fe dök zel ze le ni fi . . he vâk

Kül lü ke ri mün si vâk Feli ve hu de un ga tar

yâr yü re ğim var gör ki ne ler var yâr yü re ğim

del ci ğe rim gör ki ne ler var . . . yâre haber var  
Terennüm.

ya mennüa ma

hü gay ru ma' dud yar . . . yâr . . . yâ ri yâ ri

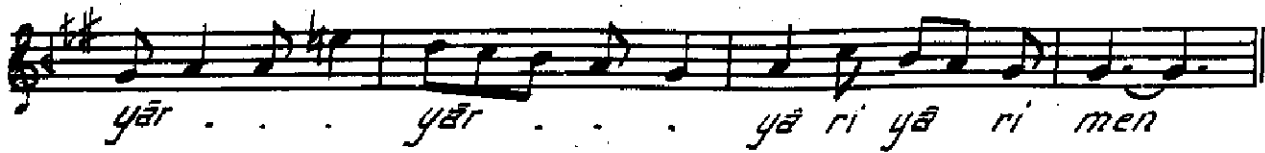
men Ves sa' yü le dey hi gay rü mer dud

yâr . . . yâr . . . yâ ri yâ ri men Kad

büs si ta bil li ka i sid kan yâr . . .

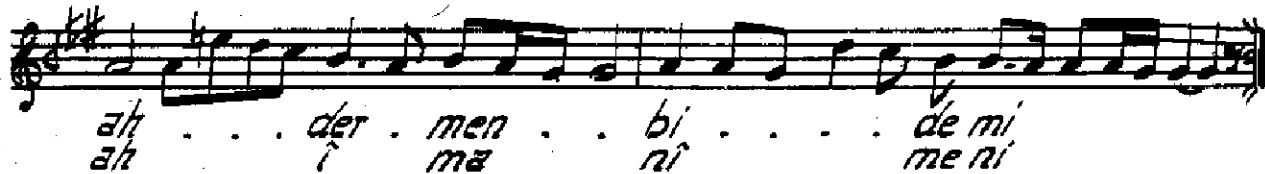
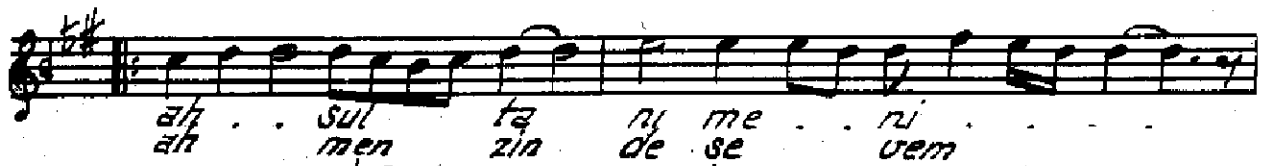
yâr . . . yâ ri yâ ri men Min





### Dördüncü Selâm

Evfer.



*Son Peşrev.*

Musical score for 'Son Peşrev' consisting of eight staves of music. The key signature is one sharp (F#) and the time signature is 2/4. The notation includes various rhythmic values such as eighth and sixteenth notes, and rests.

*Son Yürük Semâi.*

Musical score for 'Son Yürük Semâi' consisting of five staves of music. The key signature is one sharp (F#) and the time signature is 8/8. The notation includes various rhythmic values such as eighth and sixteenth notes, and rests.