

NİKRİZ ŞARKI

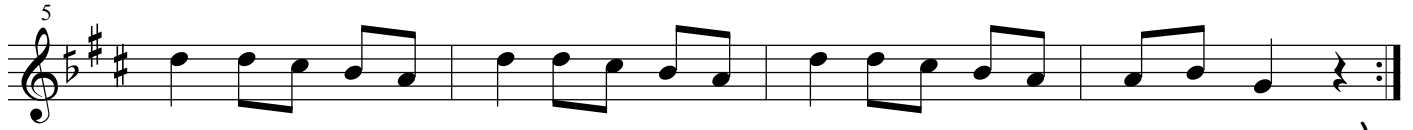
SOLMUŞ GÜLE BÜLBÜL GİBİ AĞLAR ÖZÜMÜZ

USULÜ : SEMAİ

GÜFTE : NEVİN EMGEN
BESTE : ERSİN ALİ ATLI



GİRİŞ SAZI.....



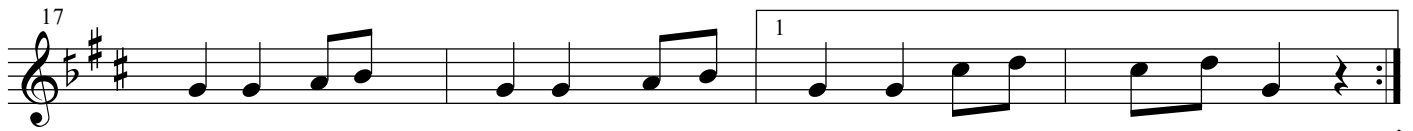
.....)



SOL MUŞ GÜ LE BÜL BÜL Gİ Bİ AĞ LAR Ö ZÜ MÜZ

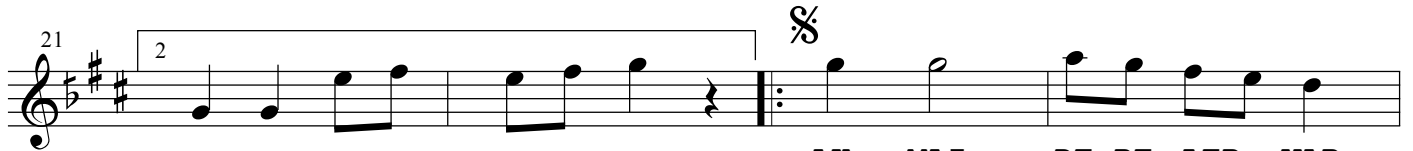


SOL MUŞ GÜ LE BÜL BÜL Gİ Bİ AĞ LAR Ö ZÜ MÜZ



(SAZ.....

.....)



.....)

AK MAZ DE RE LER VAR
KUR TAR MA YA YOL YOK



Dİ YE ÇAĞ LAR GÖ ZÜ MÜZ AK MAZ DE RE LER VAR
DE ME YOL DUR SÖ ZÜ MÜZ KUR TAR MA YA YOL YOK

29




Dİ YE ÇAĞ LAR GÖ ZÜ MÜZ (SAZ.....
DE ME YOL DUR SÖ ZÜ MÜZ

33




.....)

37




TAN RIM Bİ Zİ KUR TAR BU ÇE KİL MEZ Çİ LE DEN

41



TAN RIM Bİ Zİ KUR TAR BU ÇE KİL MEZ Çİ LEDEN

45



(SAZ.....)

49



.....) %

SOLMUŞ GÜLE BÜLBÜL GİBİ AĞLAR ÖZÜMÜZ
AKMAZ DERELER VAR DİYE ÇAĞLAR GÖZÜMÜZ
TANRIM BİZİ KURTAR BU ÇEKİLMEZ ÇİLEDEN
KURTARMAYA YOL YOK DEME, YOLDUR SÖZÜMÜZ