

Süre:11'05"

# SULTÂNÎYEGÂH FANTEZİ

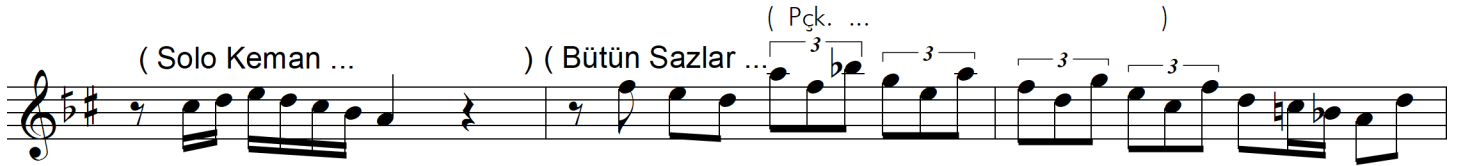
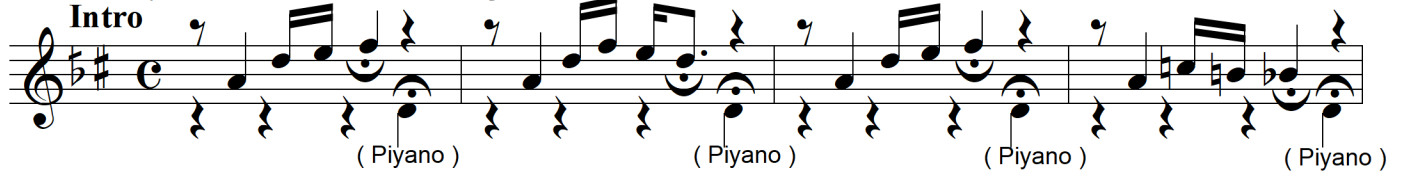
Sen Gelince Aklıma Al Tomurcuk Gül Açar

Sofyân

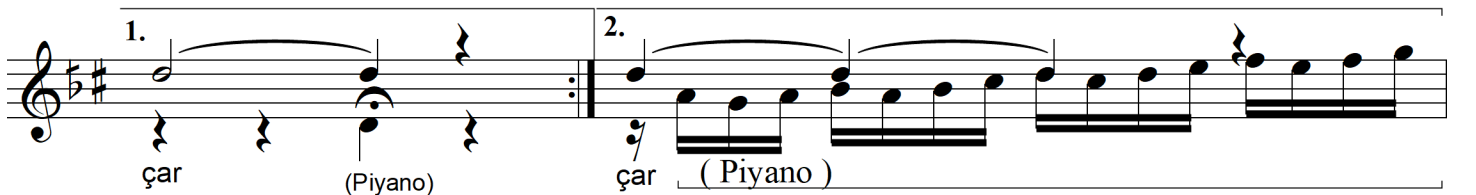
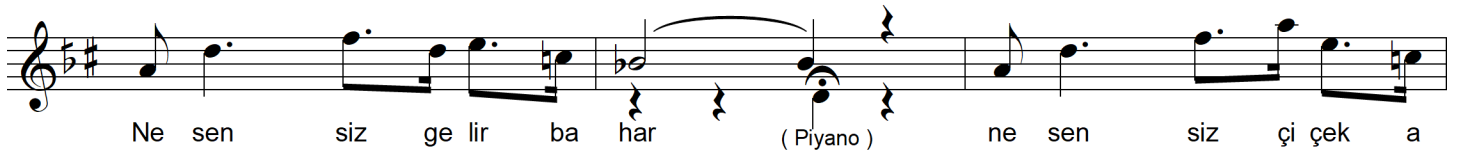
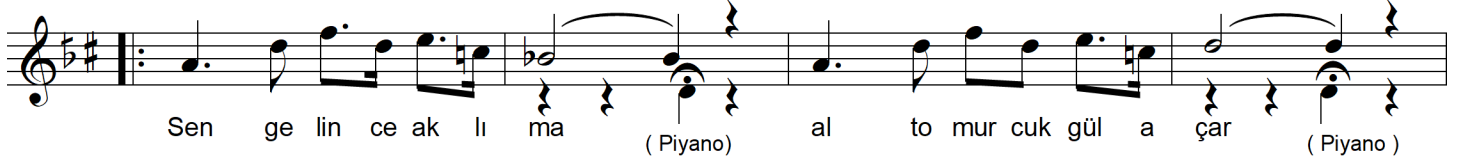
Beste : Mehmet Osman Erol Ünal  
Güfte : Özgen Bilgisel

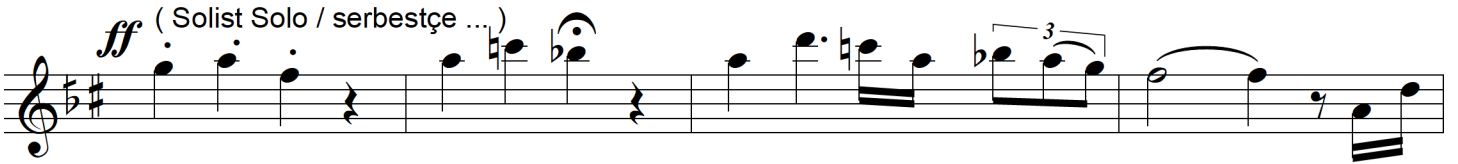
( Solo Keman / serbestçe ...

Intro



( 1. Okuma : Serbestçe / Solo Viyolonsel Eşlikli ... 2.Okuma: Ritimli+Koro eşliğinde Bütün sazlarla ...)

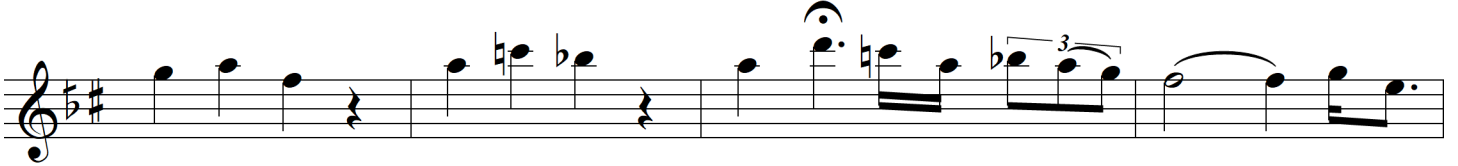




Naz lan ma naz lan ma naz lan ma da gel ar tık Ge ce



ler öy le ıs sız ge ce ler öy le ıs sız



Naz lan ma naz lan ma naz lan ma da gel ar tık Ne sen



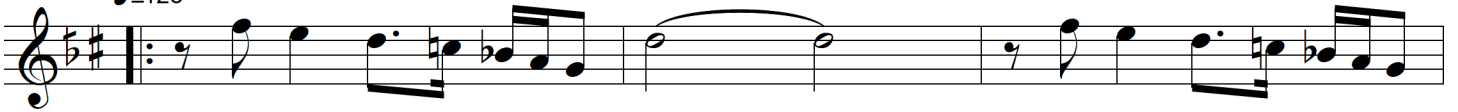
siz ge lir ba har ne sen siz çi çek a çar



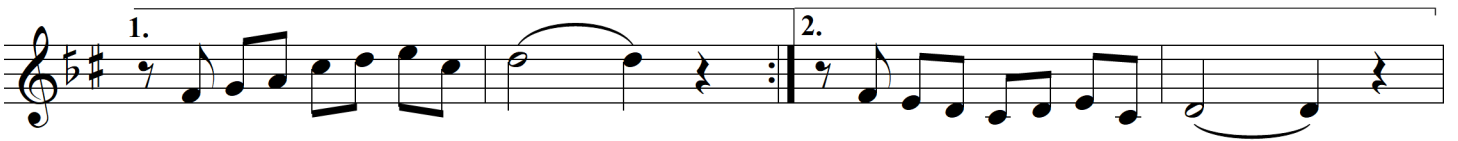
Naz lan ma da gel ar tık

*Tempo*

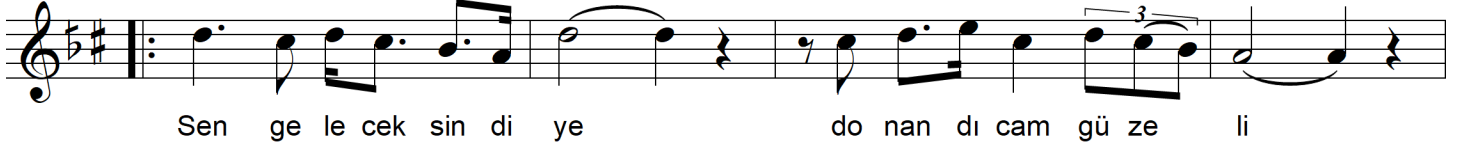
$\text{♩} = 128$



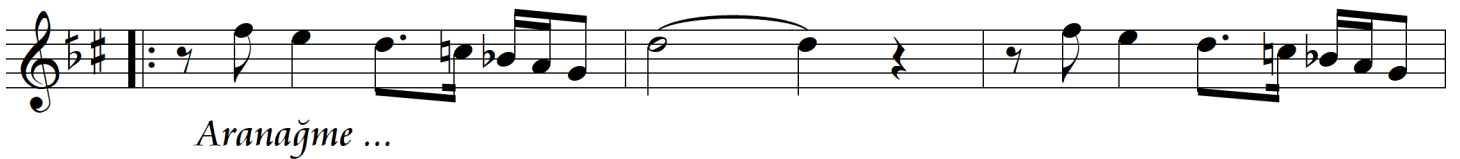
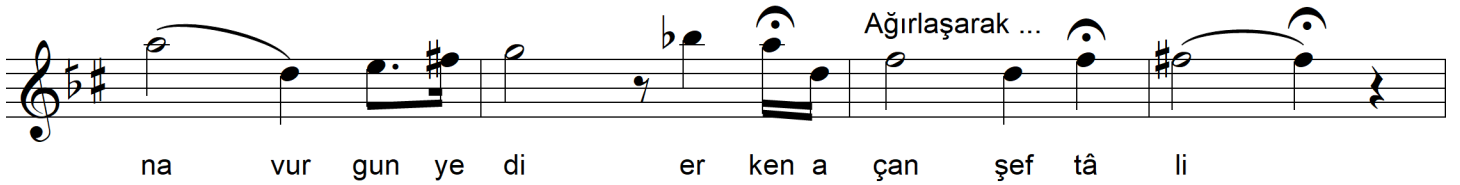
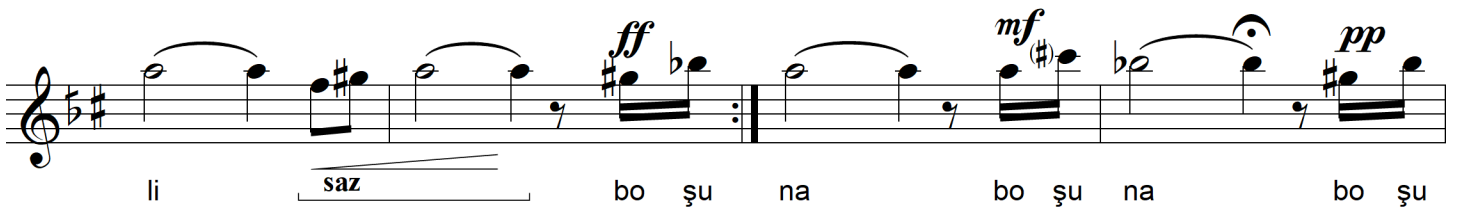
*Aranağme...*



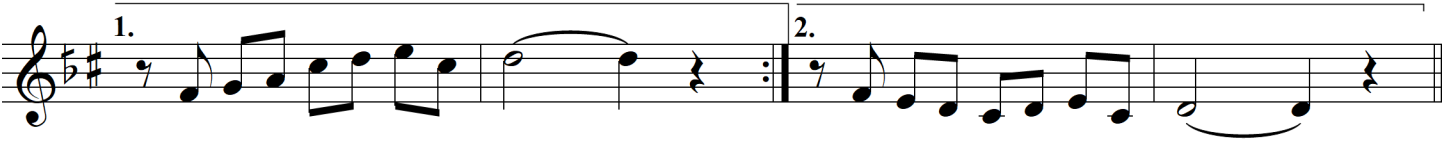
( 1. Okuma: Solist Solo ... 2. Okuma: koro ilre birlikte / Canlı ... )



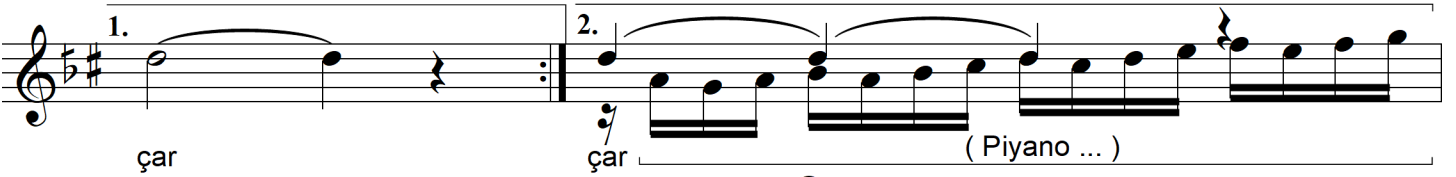
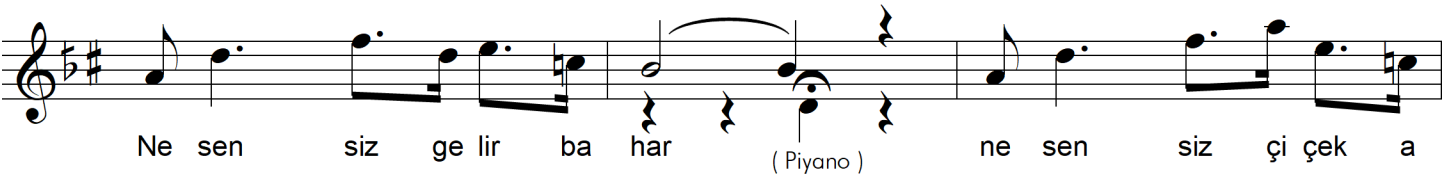
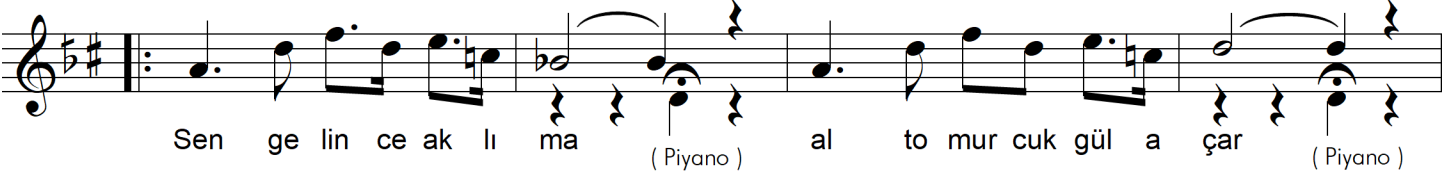
( Solist Solo / Ağırca - Serbest ... )



( Sen gelince aklıma )

*Finâl ...*

( 1. Okuma: Solist Solo/ Serbestçe + Solo Viyolonsel Eşlikli ... 2. Okuma: Ritminde ve koro eşlikli bütün sazlarla )



( Solist / Solo Vokal / serbestçe ... )

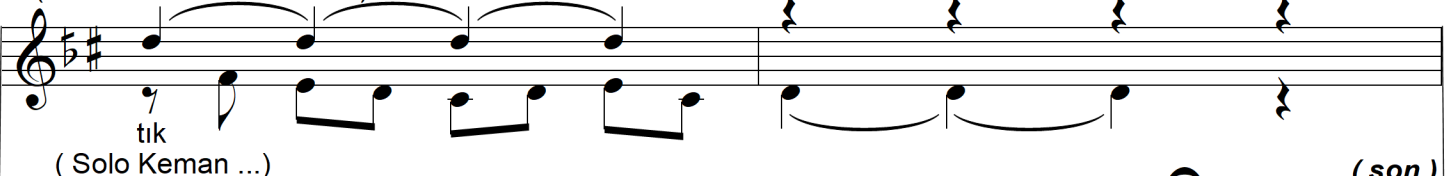
( Çello solo eşlik... )



Çello solo eşlik devam... ( Solist / Solo Vokal / serbestçe )



( Bütün sazlar birlikte ... )



( Solo Keman ... )

( son )



Erol Ünal

( Beste Tarihi: 05 Mayıs 2000 )

Sen gelince aklıma al tomurcuk gül açar  
Ne sensiz gelir bahar, ne sensiz çiçek açar  
Nazlanma da gel artık, geceler öyle ıssız  
Nazlanma da gel artık

Sen geleceksin diye donandı cam güzeli,  
Çocuklar gibi mutlu ebrûlî hanımeli  
Boşuna vurgun yedi erken açan şeftâli  
Nazlanma da gel artık