

SEGAH AYIN-I ŞERIFI

Devr-i revan

Buhurî Zâde Mustafa İtrî Efendi

14
8

Ey â Ru ker . . . sı ki rû yi tû he zâ . . . ran . . .
Ru ker . . . de be sū yi tû he za ran

şik cā ni men cā nā ni men sul ta ni men
şik cā ni men cā nā ni men sul ta ni men

Ten ha ne me nem a şı ki rû . . . yi

tû ki bestî cā ni men cā nā ni men sul ta ni men

Ber her . . . se ri mû yi tû he za . . . ran . . .

a . . . şik cā ni men cā nā ni men sul ta ni men

Ey vey şı ki eh li sa fa
ez can bi gū ez can bi gū Al lah hu

Hā hi ki cüm le can se vî
Ta lā yi ki cā nā nî se vî

tû her . . . çı ha . . . Hi an . . . se vî . . .

Ez can bi gū . . . Al . . . lah . . . hu

Dün ya ne hā . . . kün dîn bi şu
ez he me a lem bi şu

Dün ya ne hā . . . kün dîn bi şu
ez he me a lem bi şu

ne an bi gū . . . ne in bi gū . . .

ez can bi gū . . . Al . lah . . . hū

hey . yā . . . ri men . . . rā . na yi men . .

Sul . tā ni men . . . mak . bu li men

hey . hey hey hey . . . hey . ya ri men
" " " " pi ri men

men . ben de i sul tā nem . . . sul . tā

ni ci ha bā nem zan . dem . . ki ru haş

di . dem dem . . . şu ri . . . de vü hay ra

nem men . o şü dem o men şüd . . .

ez . ca . . . nü di lem ten . . . şüd . pey . ves . .

te ci ra ba . şed şed . . . in na . . .

le vü ef ga nem . . . hey . sul tā nem . . . hey . şüb ha nem .

hey yar . . . za lim dost yar . . . yar yü re g'im

yar gör ki ne ler var Ey zi hic ra

nü fi ra kat a sü man big ris . te dil me ya ni

hun ni şes te ak lu can big ris . te dil me ya ni

hun ni şes te . ak lu can big ris . te ceb ra i lü

kud si yan ra ba lü per ha suh . te ceb ra i lü

kud si yan ra ba lü per ha suh . te Em bi ya ou

Ev li ya ra di de gän big ris . te en bi ya ou

ev li ya ra di de gän big

ris . te ah ey di ri ga ey di ri ga ey di ri ga

ey di rig hem çü nem çeş

mi a yan çeş mi gü man big ris . te

Saz
ey . hay hay . me ber

ba . lā yi da

rül . mi mil ki rab

rab rab ba . ni .

ni ze dem ah mah bu

Saz
bu bi men mat lu

Saz
lu bi men mer gu

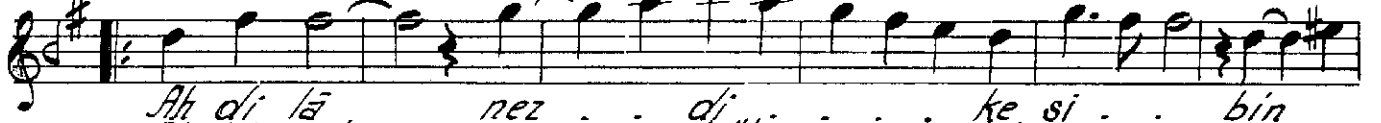
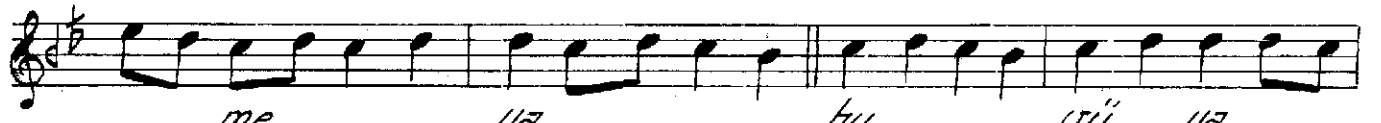
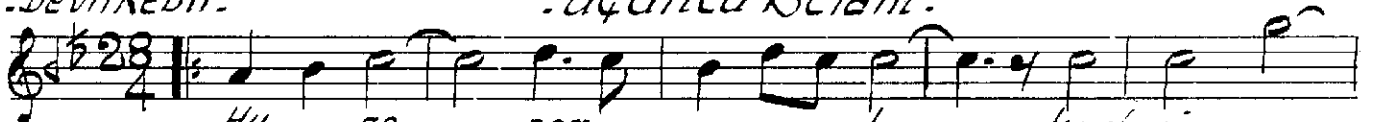
bi men men mak . bu .

bu li men

Terennüm.



Devrikebir. Üçüncü Selâm.





re vü . . . ha . . . ra . . .

"Akşak Semâi"

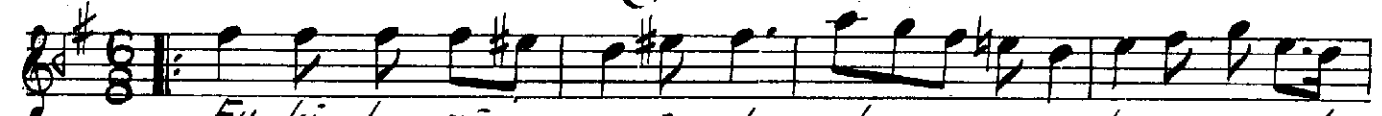


E ser da . . . red . . . e ser da red

Terenüm

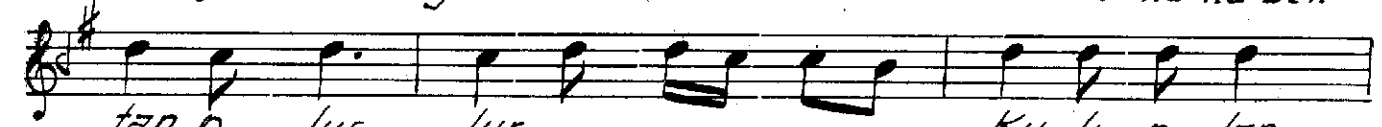


"Yürük Semâi"



Ey ki he zâr, a fe rin ah . . . buni ce sul

Her ki bu gün ve le de ah i na nu ben



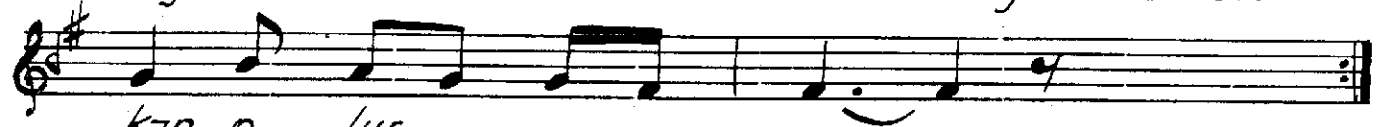
tan o lur lur . . . Ku li o lan

yüz sü re re yok sul i se



ki si ler ca nim hus re vü ha

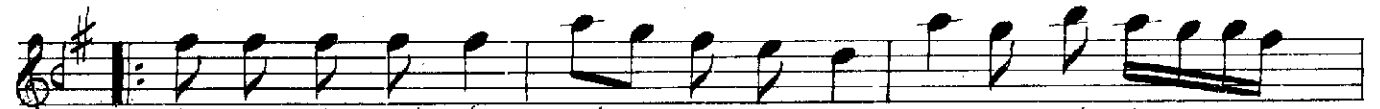
bay 'o lur ca nim bay i se sul



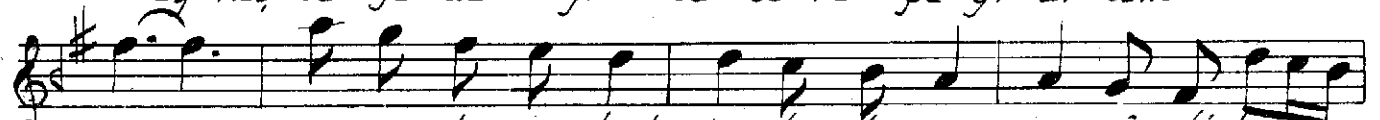
kan o lur

tan o lur . . .

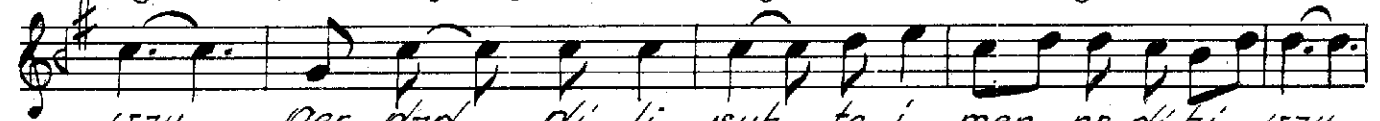
"Terennüm"



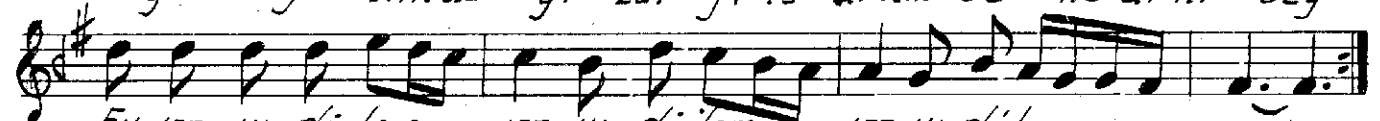
Ey as ki tū big ris te se ra pa yi di lem
Ey kēs te fe dā yi tū se ra pa yi di lem



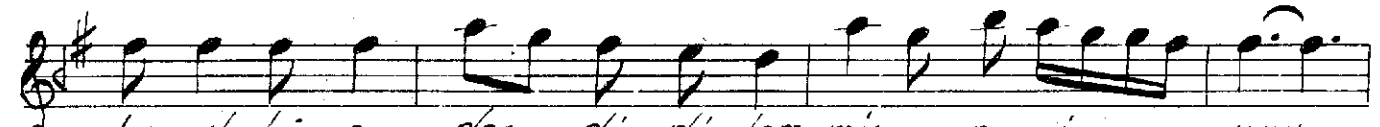
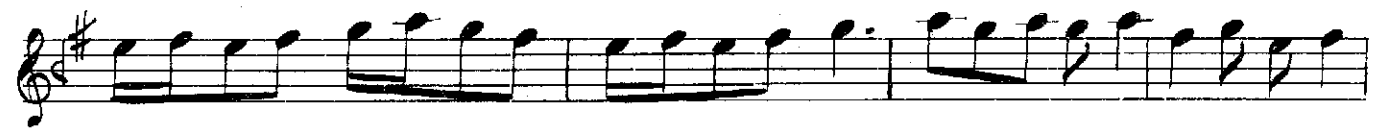
vay vey vas li ru hat kes te te men na yi di lem
vay şüb zül fū çü hin dū yi tū me' va yi di lem



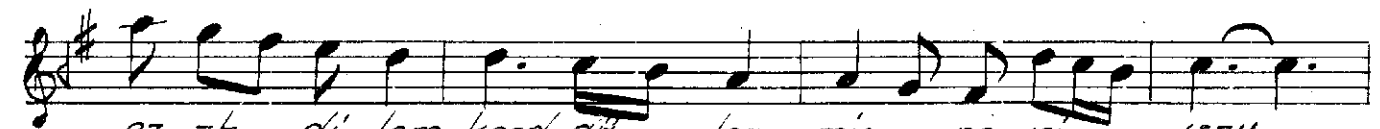
vay ger dād di li suh te i men ne di hi vay
vay ger hindu yi zül fi tū di lem va ne di hi vay



Ey va yi di lem va yi di lem va yi di lem vay
" " " " " " " " " " " " " " " "



her ah ki ez der di di lem miş . ne vi vay



ez ah di lem kerd gū len. miş . ne vi vay

ger gū sı be ha li di li men baz. kú ri vay

dá im zi di lem di lem di lem mis. ne oi

vay Ba aş ki tú big ús te pe rú payi di lem

vay Na med zi ci han derd. hi gū fa ú di lem

vay Ey cā nú di lem bi pür. sı ah vā li di lem

vay Ha li di li kes' me ba di cün ha li di lem vay

ta ez se ri kú yi tú te ma mes tú me ra

vay der sa ga ri di de hun mü da mes tú me ra vay.

Ez vas li fi ra ki tú kú nun a. za. dem
" " " " " " " " " " " "

Ez tú ga mi aş ki tú te ma

mes tú me ra vay. ez tú ga mi aş

ki tú te ma mes tú me ra vay

Evfer. "Dördüncü Selâm"

Ah . . . ey a . . .

şı kan . . . ey . . . ey a . . .

şı kan . . .

an . kes kes . . . ki bi . . .

ned rü . . .

yi o . . .

Saz
şu . . . ri ri . de . ker . .

ker . . . ded . . . ak . . .

ak . . . li o . . .

şif . . .

te ker . . . ded . tu . . .

tu . . . yi o . . .

"Son Pesrev"

A musical score for the piece "Son Pesrev". It consists of ten staves of music written in a single system. The key signature is one sharp (F#) and the time signature is 4/4. The notation includes various rhythmic values such as eighth, sixteenth, and thirty-second notes, as well as rests and accidentals. The melody is primarily eighth-note based with some sixteenth-note runs.

"Son Yürük Semâi"

A musical score for the piece "Son Yürük Semâi". It consists of three staves of music written in a single system. The key signature is one sharp (F#) and the time signature is 4/4. The notation includes eighth and sixteenth notes, with some triplet markings. The piece concludes with a double bar line and repeat dots.