

Süre = 5'15"

Aksak Semai

SUZİDİL SAZ SEMAİSİ

RYDİN ORAN

1. HANE

mf



TESLİM

p



2. HANE

mf



3. HANE

f

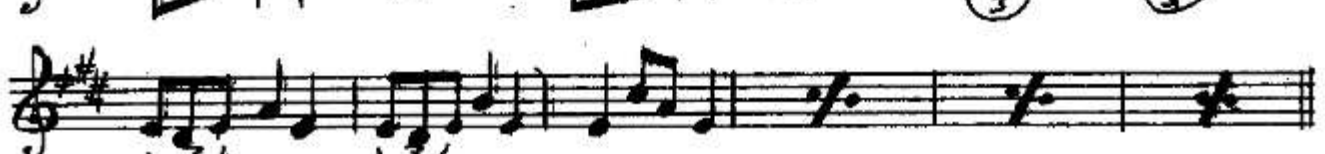
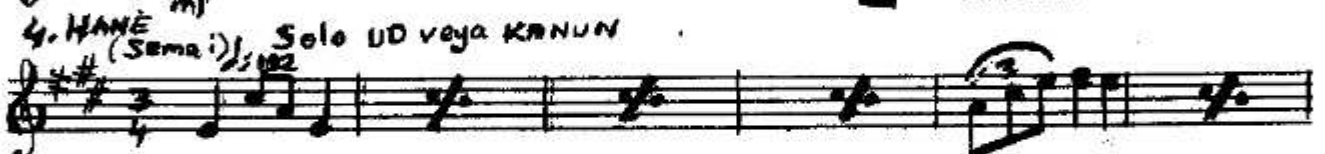


4. HANE

(Sema'i)

Solo UD veya KANUN

mf



Suzidi S.S Sah. 2

BERABER

Handwritten musical score for 'Suzidi S.S Sah. 2'. The score is written on eight staves in treble clef with a key signature of two sharps (F# and C#) and a 4/4 time signature. The first staff begins with a double bar line and a repeat sign. The music is marked with a dynamic of *mf* (mezzo-forte) on the first three staves. The fourth staff continues with *mf*. The fifth and sixth staves are marked with *mf* and *p* (piano). The seventh staff is divided into two measures, labeled '-1-' and '-2-'. The eighth staff concludes with a double bar line, a fermata, and the instruction 'Rit. A.O' (Ritardando, Ad libitum).