

HİCAZ ZEMZEME PEŞREV

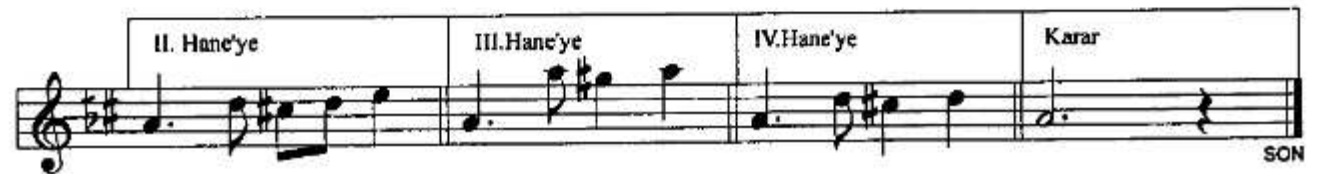
USÛL: ÇEMBER

BESTE: KANUNİ MEHMED BEY

Birinci Hane



Mülâzime 



İkinci Hane

The second hane consists of seven staves of music. The first staff begins with a treble clef, a key signature of two sharps (F# and C#), and a common time signature. The melody starts with a quarter rest, followed by a quarter note G4, an eighth note A4, and a quarter note B4. The second staff continues with a quarter note C5, an eighth note B4, and a quarter note A4. The third staff features a quarter note G4, an eighth note F#4, and a quarter note E4. The fourth staff has a quarter note D4, an eighth note C4, and a quarter note B3. The fifth staff begins with a quarter rest, followed by a quarter note A3, an eighth note G3, and a quarter note F#3. The sixth staff continues with a quarter note E3, an eighth note D3, and a quarter note C3. The seventh staff concludes with a quarter note B2, an eighth note A2, and a quarter note G2, followed by a double bar line and a repeat sign.

Üçüncü Hane

The third hane consists of seven staves of music. The first staff begins with a treble clef, a key signature of two sharps (F# and C#), and a common time signature. The melody starts with a quarter rest, followed by a quarter note G4, an eighth note A4, and a quarter note B4. The second staff continues with a quarter note C5, an eighth note B4, and a quarter note A4. The third staff features a quarter note G4, an eighth note F#4, and a quarter note E4. The fourth staff has a quarter note D4, an eighth note C4, and a quarter note B3. The fifth staff begins with a quarter rest, followed by a quarter note A3, an eighth note G3, and a quarter note F#3. The sixth staff continues with a quarter note E3, an eighth note D3, and a quarter note C3. The seventh staff concludes with a quarter note B2, an eighth note A2, and a quarter note G2, followed by a double bar line and a repeat sign.

Dördüncü Hane

The image displays a musical score for the piece 'Dördüncü Hane'. It consists of six staves of music, all written in a single treble clef. The key signature is one sharp (F#), and the time signature is 7/8. The notation includes various rhythmic values such as eighth and sixteenth notes, rests, and accidentals. The piece concludes with a double bar line and a repeat sign (two crossed lines) at the end of the sixth staff.

Bu eser TRT Müzik Dairesi Arşivi'nden alınmıştır.