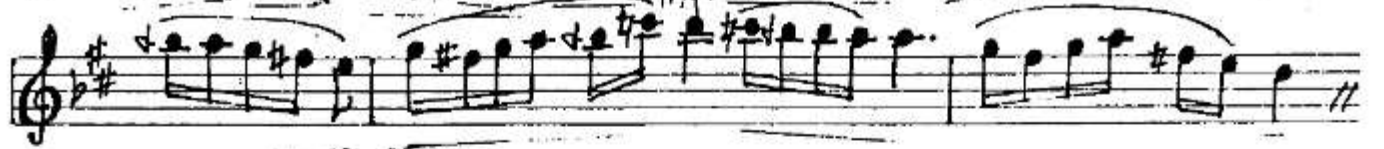


No: I - HICAZ - SAZ SEMAI ESMA KARAMANCI
1990 - Eylül



No: I HICAZ SAZ SEMAI

E.K.

3. HANE

Exercise 3, titled 'HANE', is written in treble clef with a key signature of two sharps (F# and C#). The piece consists of four staves of music. The first staff begins with a treble clef, a key signature of two sharps, and a common time signature. The melody is composed of eighth and sixteenth notes, often beamed together. The second staff features several triplet markings (indicated by a '3' in a circle) over groups of three notes. The third staff continues the melodic line with various note values and rests. The fourth staff concludes the exercise with a double bar line and a repeat sign.

4. HANE

Exercise 4, titled 'HANE', is written in treble clef with a key signature of two sharps (F# and C#) and a 4/4 time signature. It consists of nine staves of music. The first staff starts with a treble clef, a key signature of two sharps, and a 4/4 time signature. The melody is primarily composed of eighth and sixteenth notes, with some quarter notes. The piece is characterized by its rhythmic complexity and melodic flow. The final staff ends with a double bar line and a repeat sign.