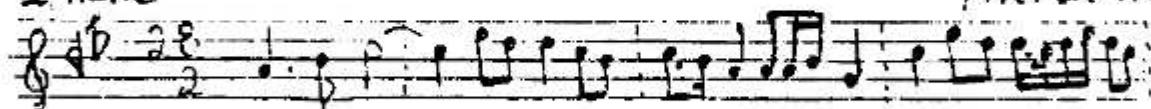


♩ = 76

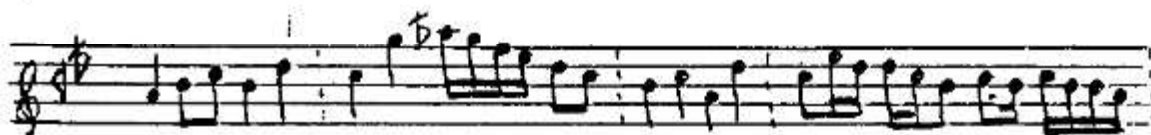
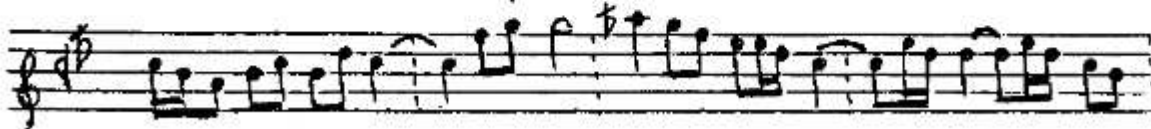
Remel  
I. Nane

# BESTENİGÂR PEŞREV

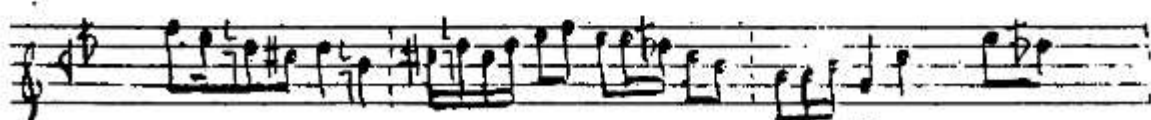
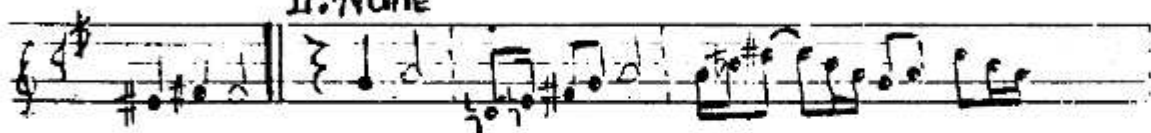
Meral İncilli



§ Teslim



II. Nane



§ III. Nane



Bestenigör Peşrevinin devamı

The image shows a handwritten musical score for a piece titled 'Bestenigör Peşrevinin devamı'. The score is written on ten staves of music paper. The first staff begins with a treble clef, a key signature of one sharp (F#), and a 2/4 time signature. The music consists of a series of eighth and sixteenth notes, with some rests and dynamic markings. A section marked 'IV. Hane' begins on the fifth staff, indicated by a double bar line and a fermata. The notation continues with various rhythmic patterns and accidentals. The piece concludes on the tenth staff with a double bar line and a fermata. The signature 'j.m.' is written at the end of the score.

6.3.1987

Merat incilli

Söz 6-A

Sü: 1425

— i s u r j