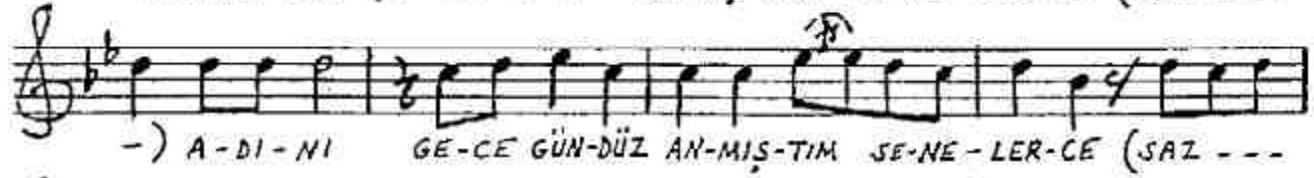
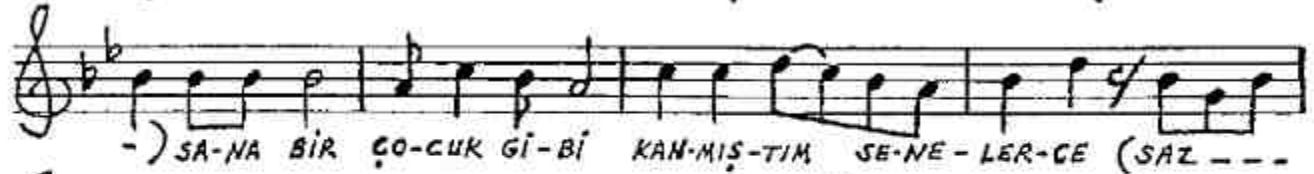


SOFYAN
(♩ = 112)

NIHAVENT ŞARKI

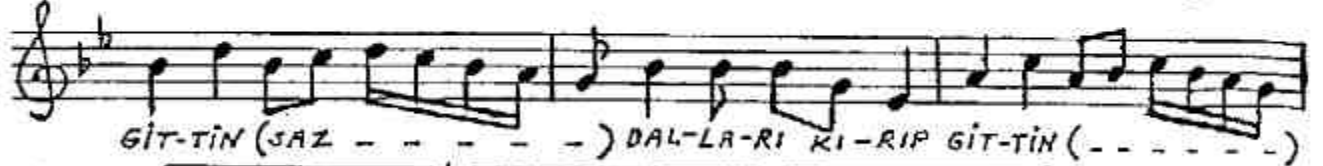
(Sana Bir Çocuk Gibi Kanmışım Senelerce)

Müzik:
OSMAN ÜLKÜ
Söz:
SADIK ATAY





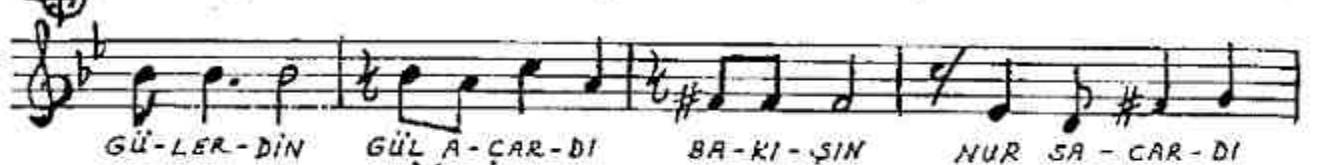
-) EL-LE BİR O-LUP GİT-TİN (SAZ - - - - -) YOL-LA BİR O-LUP



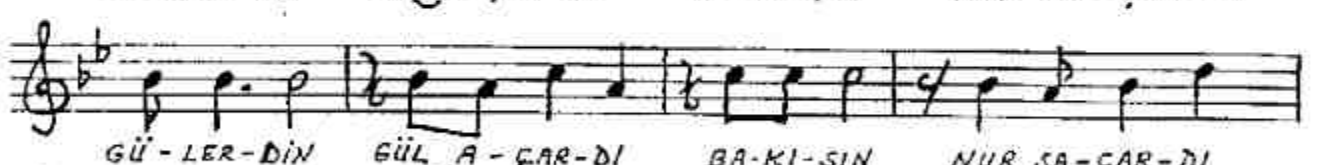
GİT-TİN (SAZ - - - - -) DAL-LA-RI KI-RIP GİT-TİN (- - - - -)



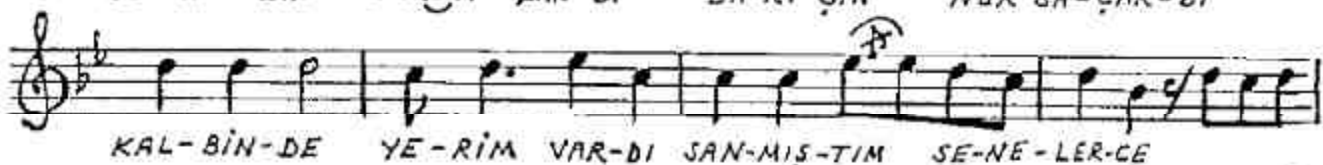
KON-MUŞ-TUM SE-NE-LER-CE (SAZ - - KON-MUŞ-TUM SE-NE-LER-CE D.C.



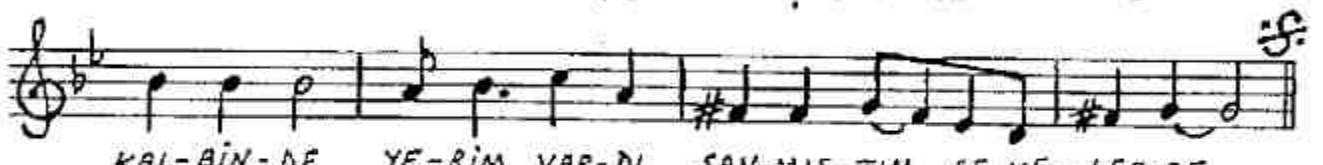
GÜ-LER-DİN GÜL A-ÇAR-DI BA-KI-ŞIN NUR SA-ÇAR-DI



GÜ-LER-DİN GÜL A-ÇAR-DI BA-KI-ŞIN NUR SA-ÇAR-DI



KAL-BİN-DE YE-RİM VAR-DI SAN-MIŞ-TİM SE-NE-LER-CE



KAL-BİN-DE YE-RİM VAR-DI SAN-MIŞ-TİM SE-NE-LER-CE

SANA BİR ÇOCUK GİBİ KANMIŞTIM SENELERCE
ADINI GECE GÜNDÜZ ANMIŞTIM SENELERCE

YARINI DÜŞÜNMEDEN, BIKMADAN ÜŞENMEDEN
SEVGİNLE HİÇ SÖNMEDEN, YANMIŞTIM SENELERCE
ELLE BİR OLUP GİTTİN, YOLLA BİR OLUP GİTTİN
DALLARI KIRIP GİTTİN, KONMUŞTUM SENELERCE

GÜLERDİN GÜL AÇARDI, BAKIŞIN NUR SAÇARDI
KALBİNDE YERİM VARDI SANMIŞTIM SENELERCE

Sadık ATAY