

PAPURİ -I-

Yöresi: Van
Kaynak: Mahallî Ekip

Derleyen: Ruhi Su
Notalayan: Sadi Yaver Ataman

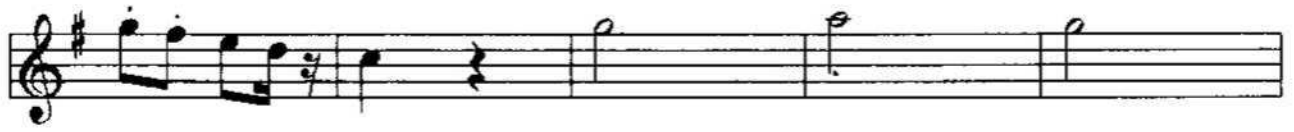
♩ = 104-120 (1)



This image displays a page of musical notation, consisting of ten staves of music. The music is written in G major, indicated by a single sharp (F#) on the treble clef. The notation includes various melodic lines, slurs, ties, and rests, suggesting a complex piece of music. The staves are arranged vertically, and the music is written in a standard staff format with a treble clef and a key signature of one sharp.



$\text{♩} = 108$ (3)





NOT: Sözlü bölümde de farklı bir "Papuri" ezgisi mevcuttur.