

SENGİN

EVCAĞAŞARKI

KANUNİ NAZİM BEY

MUSICAL NOTATION (treble clef, 2/4 time, key signature of one sharp) with lyrics: NÜK SET Dİ - - - Yİ NE SAZ A - - - TE Şİ SEV

MUSICAL NOTATION with lyrics: DA - - YA GÖ NÜL - - - (AH) - SAZ

MUSICAL NOTATION with lyrics: DERDİM Gİ - - - Bİ - - - HİÇ - - - KİM - - - SE YE DERE

MUSICAL NOTATION with lyrics: VER - - ME SİN AL - - - LAH - SAZ DERDİM Gİ

MUSICAL NOTATION with lyrics: Bİ - - HİÇ - - - KİM - - - SE YE DERE

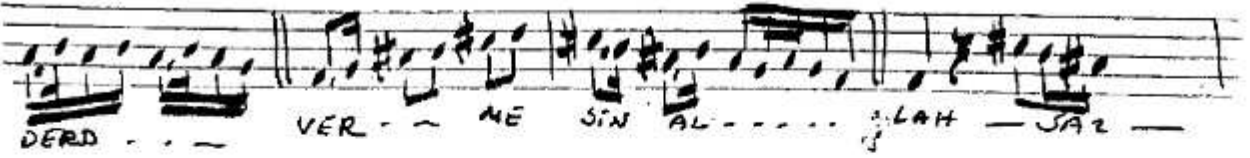
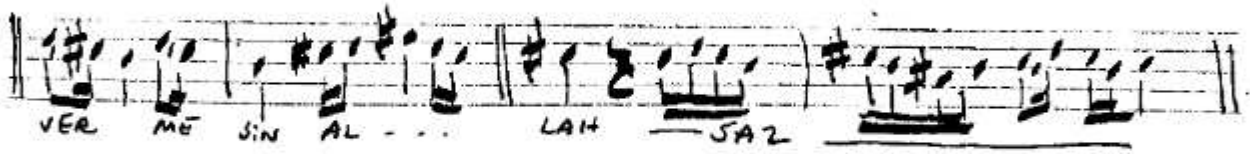
MUSICAL NOTATION with lyrics: VER ME SİN AL - - - LAH SAZ

MUSICAL NOTATION with lyrics: ÖL DÜR DÜ BE Nİ HAS - - - RE Tİ - - - LE SAZ

MUSICAL NOTATION with lyrics: ÖL DÜR DÜ BE Nİ SAZ HAS - - - RE Tİ LE NA - - LE

MUSICAL NOTATION with lyrics: VÜ CÂN - - - GÂH SAZ

MUSICAL NOTATION with lyrics: DERDİM Gİ Bİ HİÇ - - - KİM - - - SE YE DERE



↳ Karsı sayfaya

Nübaetti yine âteş-i sevdâ-yı  
gönül âh.

Ulvi Ergüner'deki eski yazı defterden  
aynen kopya 30.3.1972

İsmail Kar

Not: Zemin sonunda  
güfte (âh) la bitmek içü -  
bediyar. Aşıl'da muhtemeldir

3in de (Nale vü) değil  
(Nâle ni cangâh) olmalı.

İsmail Kar