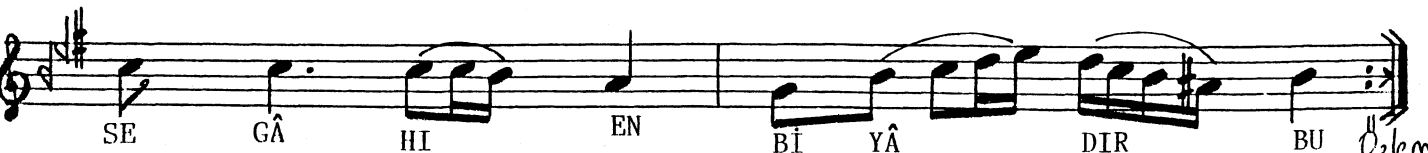
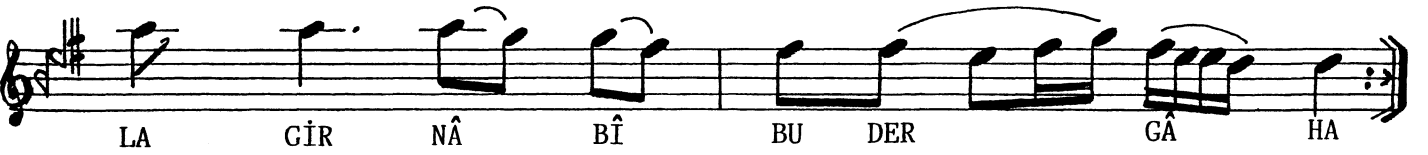
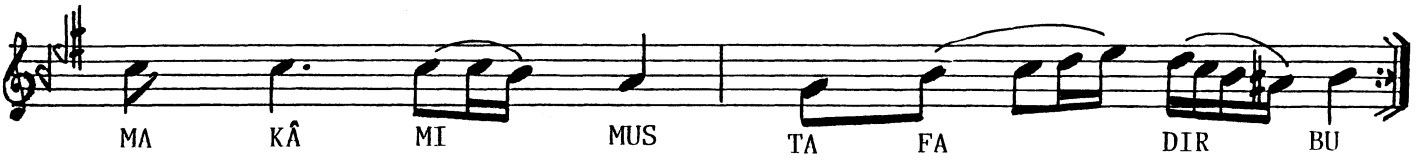
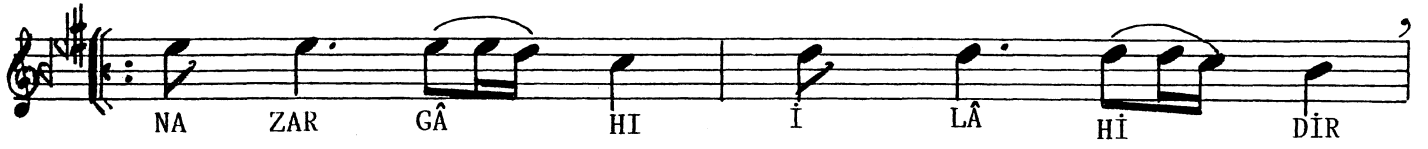
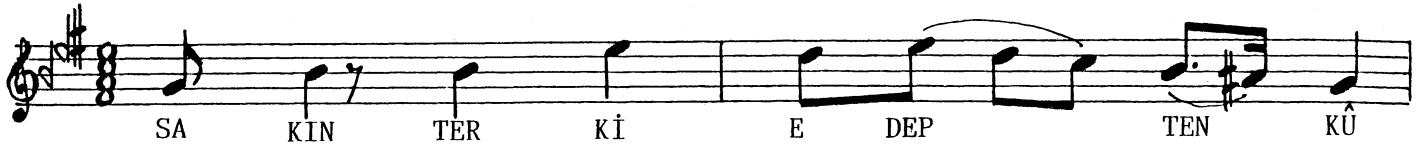


S E G Â H (Îlâhi)
(Sakin terk-i edepten)

Beste: Amir ATEŞ
Güfte: Urfalı NÂBÎ

DÜYEK



SAKIN TERK-İ EDEPTEN, KÛY-İ MAHBUB-İ HÜDÂDIR BU
NAZARGÂH-İ İLÂHÎDİR, MAKAM-I MUSTAFADIR BU
MÜRÂÂT-I EDEP ŞARTIYLA GİR NÂBÎ BU DERGÂHA
METÂF-I KUDSİYÂNDIR, BUSEGÂH-T ENBİYÂDIR BU

Özlem
Ect.