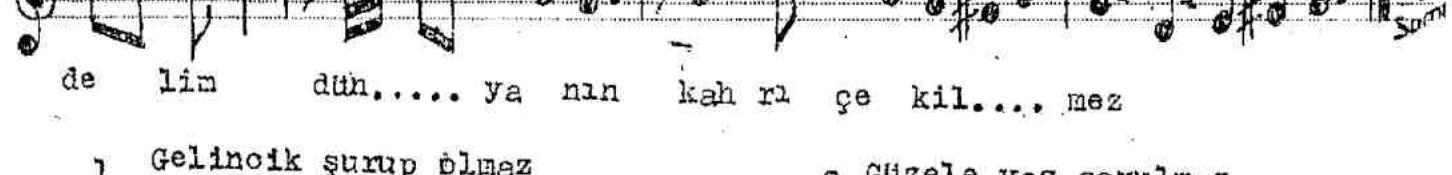
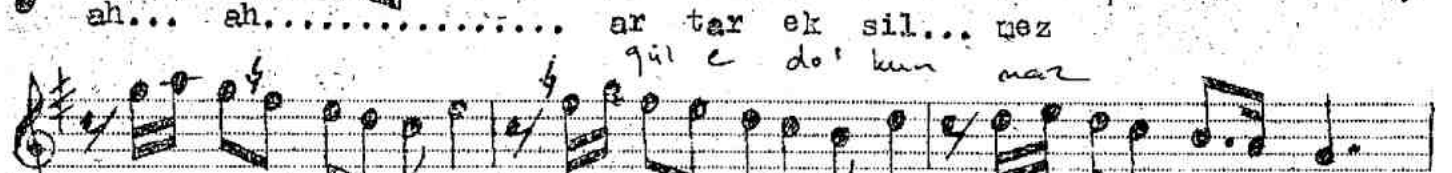
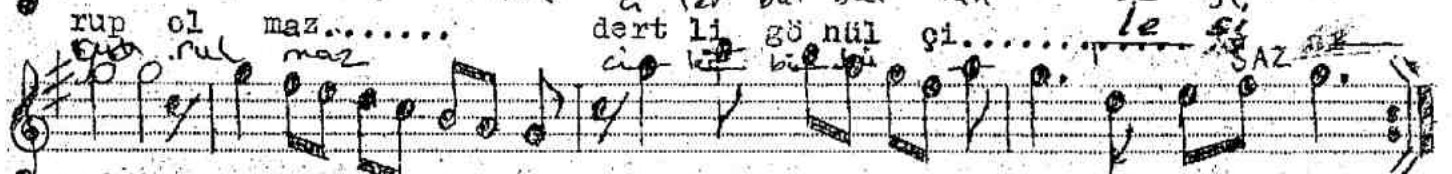
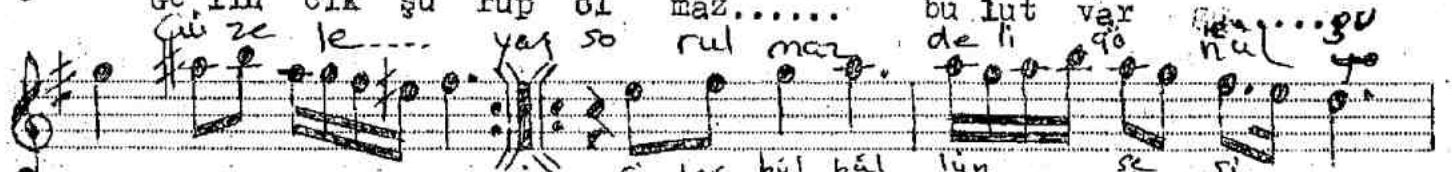
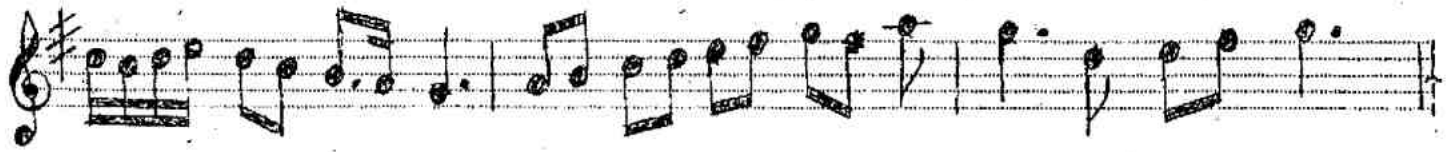


Aksak
Yürükçe

M A H U R

Güfte ve Beste: Sabri Süha Ansen
İstanbul : 21/2/1963



1 Gelincik şurup olmaz
Bulut var gurup olmaz
Dertli gönül çilesi
Ah ah artar eksilmez
Eğlenelim zevk edelim
Dünyanın kahrı çekilmez

2 Güzele yaş sorulmaz
Deli gönül yorulmaz
Çiler bübü lün sesi
Ah-ah güle dokunmaz
Eğlenelim zevk edelim
Dünyanın kahra çekilmez