

BEYATI BÖSELİK AYIN-I ŞERİFİ

Devr-i revan

Zekâî Zâde Hâfız Ahmed Efendi

*Ey de ra ver de ci ha ni râ . . . zi nây . . .*

*hey yi hey sul tā ni men . . . hey yi hey kûn kâ ri men*

*Ban ki nâ yû ban ki nâ yû ban . . . ki nây . . .*

*Hey yi hey sul tā ni men . . . hey yi hey kûn kâ ri men*

*Hod'ku da yest in he me ru pu . . . su çist . . .*

*hey yi hey sul tā ni men . . . hey yi hey kûn kâ ri men*

*mi ke se deh li ku da râ râ . . . ku day . . .*

*hey yi hey sul tā ni men . . . hey yi hey kûn kâ ri men*

*hey yi hey râ nâ yi men . . . hey yi hey zi bâ yi men*

*yâr . . . yâr . . . yâr yû re gîm yâr . . .*

*yâr yû re gîm del ci çe rim gör ki ne ler var . . .*

*yâr . . . yâr . . . yâ re kâ ber var*

ey ru şî ker . . . de ri şî ta

bi . his . . . kün . . . ba his . . . ta

ba hi şî kün . . . bi hi şî ta

çi . zi bi dih . . . der viş . . . ta

Teş . ri fi dih . . . uş şak ta .

pür . nür . kün . . . a fak . . . ta

ber zeh ri zen . . . tir . . . yak . ta .

çi . zi bi dih . . . der viş . . . ta

ya ri ma dil da ri ma . . . a li mi es ta ri ma

yu su fu di de ri ma . . . rev na ki ba za ri ma

hey yi hey . . . hey dost . . . pi ri men ca na ni men

ger be bos tan ba tu im kar şüa gül za ri ma

ver be zîn den ba tû im . . . gûl bi ru yed ha ri ma

Hey yi yâr . . . hey dast . . . pi ri men ca na ni men

ger de ra tes be tû im nur ker ded na ri ma

ver be cen net bi tû im . . . nar sûd en va ri ma

hey yi yâr . . . hey dast . . . pi ri men ca na ni men

Ah bi ya kem ru zi ma ra ru zi ba . . . dest  
Ah ze zhi meclis ki sa ki bah ti ba . . . şed

ah e zin pes i sû is ret ber me zi . . . dest  
ah ha ri fa nes cû mey dû ba ye zi . . . dest

hey yi hey hey hey yâr . . . ya ri ya ri men  
" " " " " " " " " " " "

### İkinci Çetm

*Evfer.*

Ah . . . sul . ta . ni . me ni .  
Ah . . . der . men . bi . de mi .

ni . sul . ta . ni . me . ni .  
mi . men . zin . de . se . vem .

ah . . . en . der . lu . can .  
ah . . . yek . can . di . ci . se . ved .



Can red sad ma ni meni



ah ma ni meni



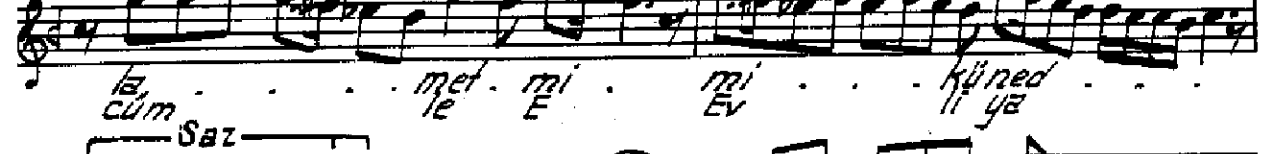
Ah rin da den se la  
Ah ey seh seh hü sa



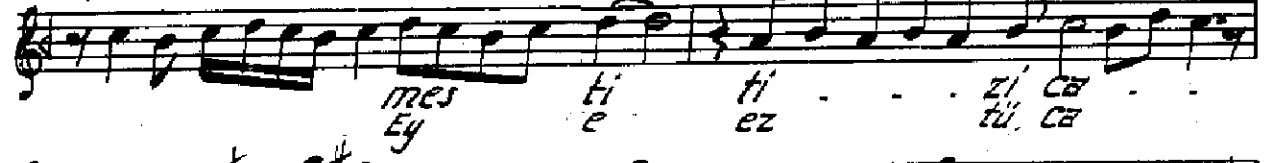
me ti mi kü ned  
med. di ni ma



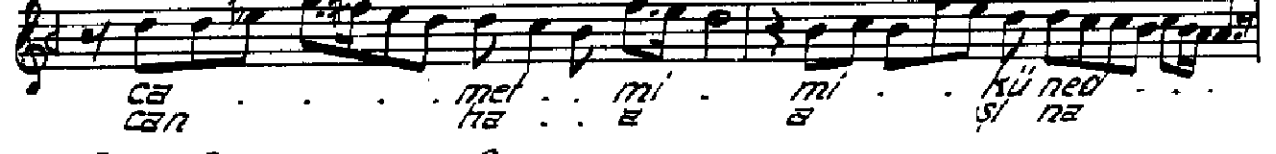
can ta ta gu la  
ey fa fah ri cü



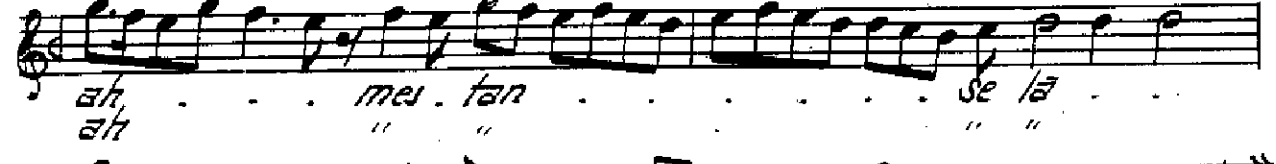
la cum met mi mi kü ned  
cüm le E Ev li ye



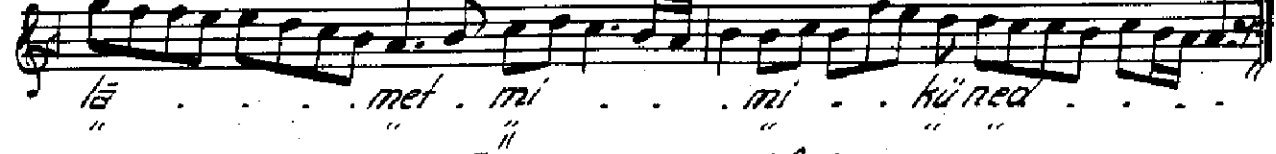
mes ti ti zi ca  
Ey e ez tü ca



ca can met mi mi kü ned  
ca ha a a si na



ah ah mei fan se la  
" " " "



la met mi mi kü ned  
" " " "

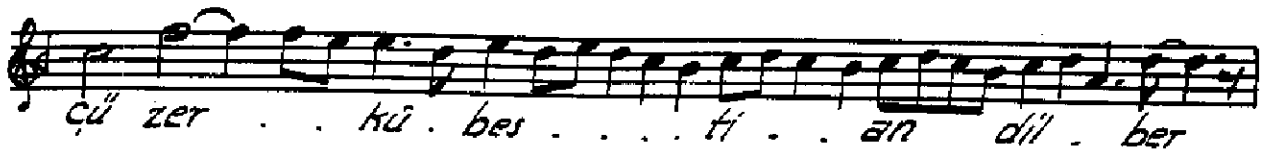
*Heine's Selam*



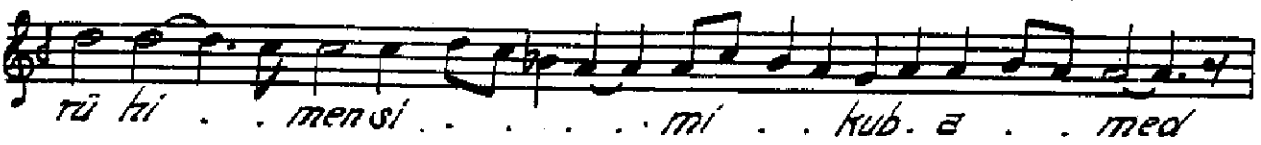
Fränkcin  
Sa la can ha yi mus ta kan



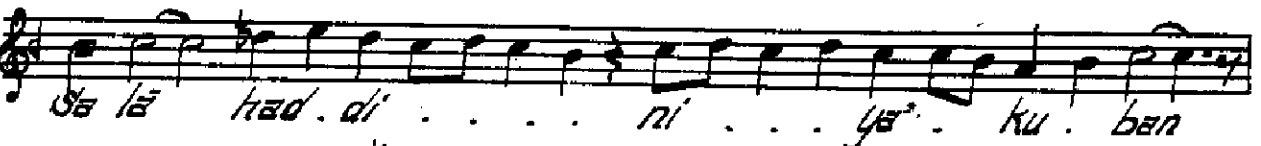
ki . yek dil . da . . ri . . kub . a . med



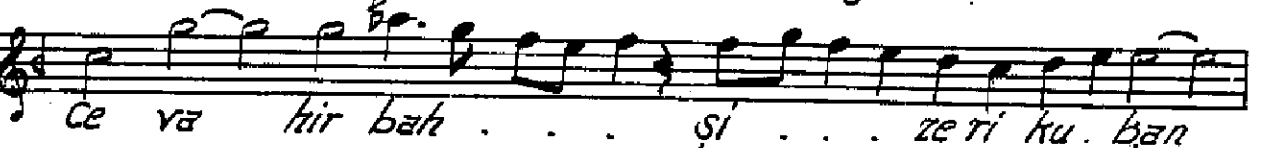
cü zer . . kü . bes . . . ti . . an dil . ber



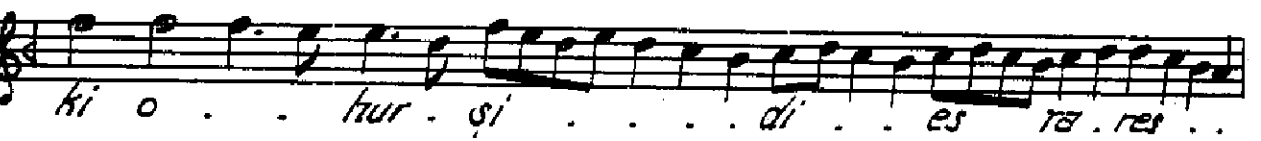
rü hi . . men si . . . mi . . kub . a . . med



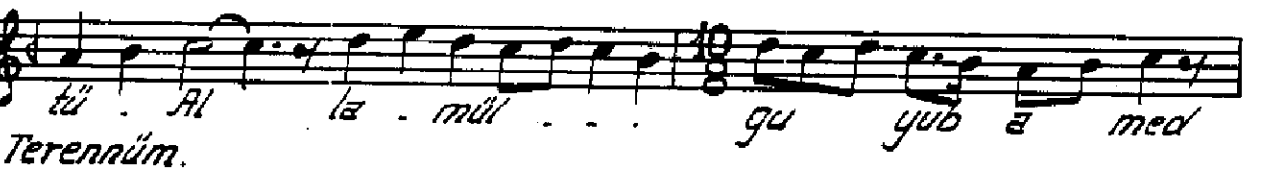
da lā had . di . . . ni . . . ya . ku . ban



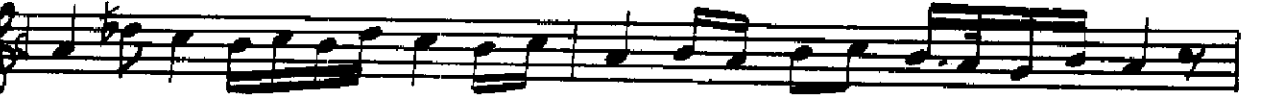
ce va hir bah . . . ş i . . . ze ri ku . ban



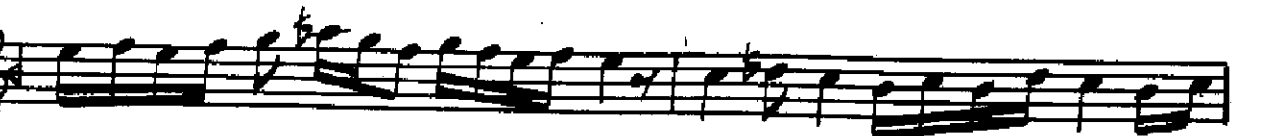
ki o . . hur . ş i . . . di . . es ra . res . .

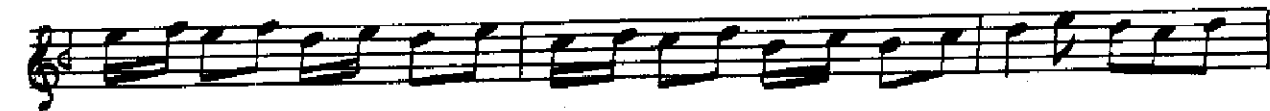
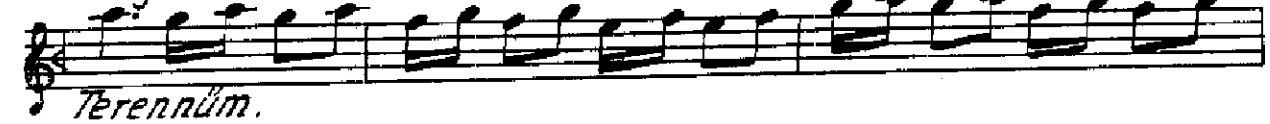
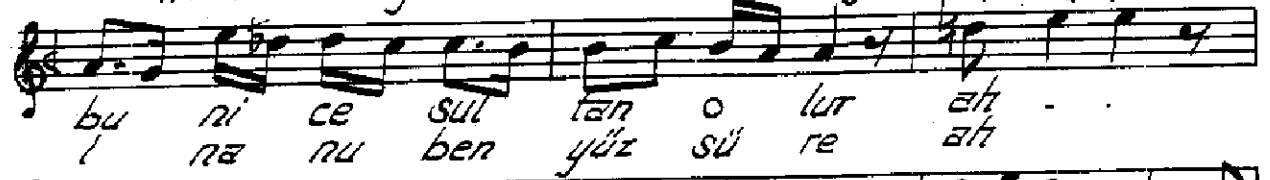


tū . Al la . mül . . . gu yub a med



Terennüm.





tendi zi şem sel hakkı Teb ri zi çi di did güf

tim kez an nür . be ma . in na zar üf

ted yā ri men yār ahi yā ri men yār

yār . . . yār . . . yār yār yā ri men

yā ri me ra ahi yā ri men yā ri me ra

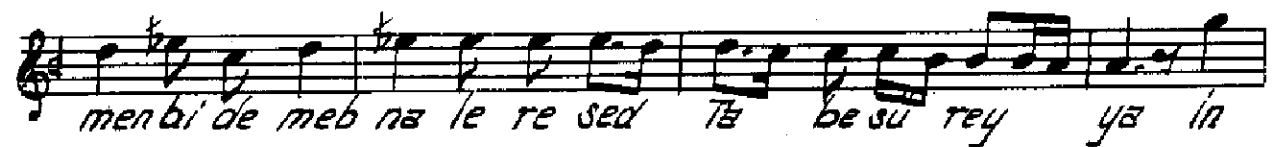
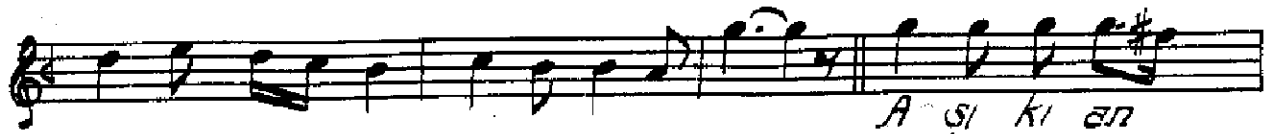
du yā ri men vay Be hakkı an ki de rin dil

be cuz ve lā yi tū nist Ve li i o ne şevemkū

zi ey . . li ya yi yi tū nist Me bād ce

nembi . . gam e ger fe da yi tū nist me bād . çeş

memtū . . şen e ger . . şı fa yi tū nist  
Terennüm.





# Dördüncü Selam.

Evfer.

Alh sul tā ni . . . meri  
Alh der men bi de mi

ni sul tā ni me ni  
mi men zin de se vem

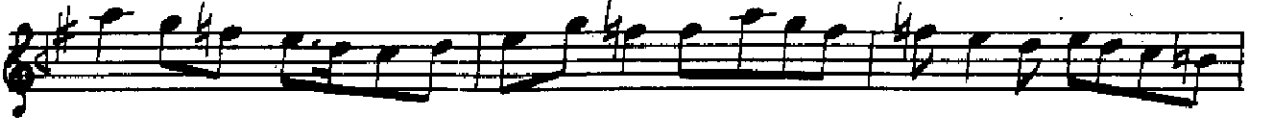
Alh en der di . . . lü can  
Alh yek can çl se ved

can ved . . . sad mā ni . . . meri  
ved ca ri me ri

Alh . . . i . . . mā . . . ni . . . me ni . . .

## Çatırbuselik Çon Pesrevi, Rıza Efendi

Çatırbuselik Çon Pesrevi, Rıza Efendi



*Yon yürük Semâi.*

