

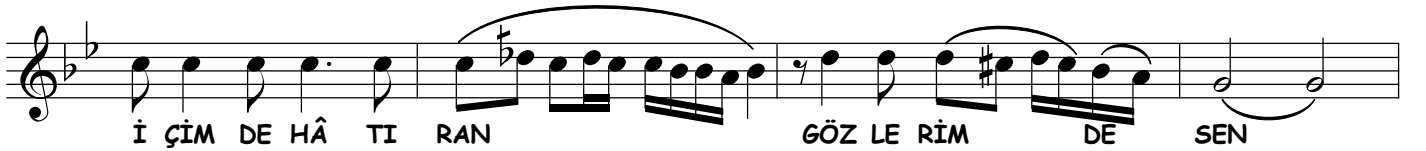
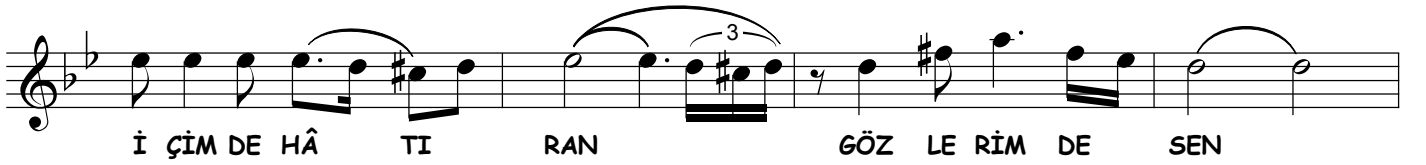
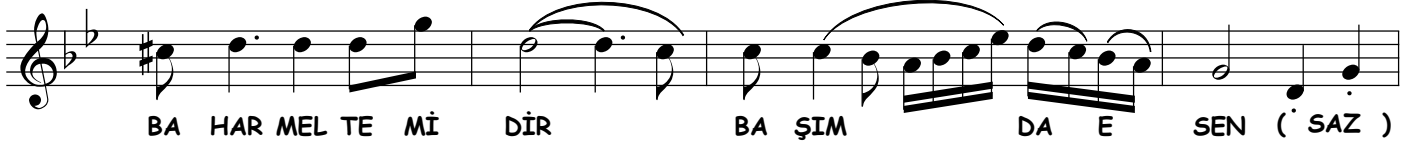
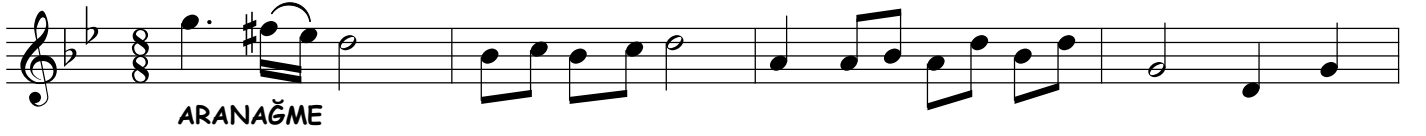
NIHAVEND ŞARKI

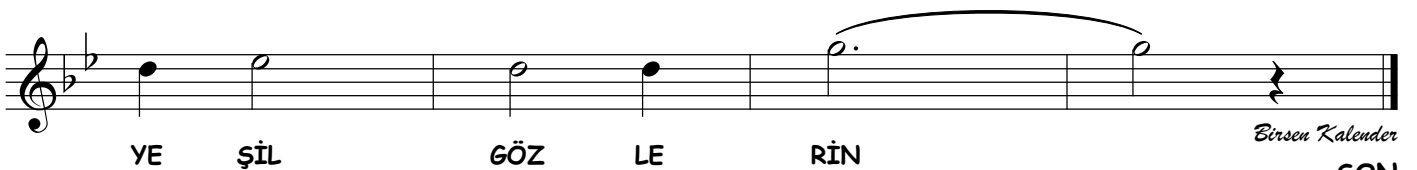
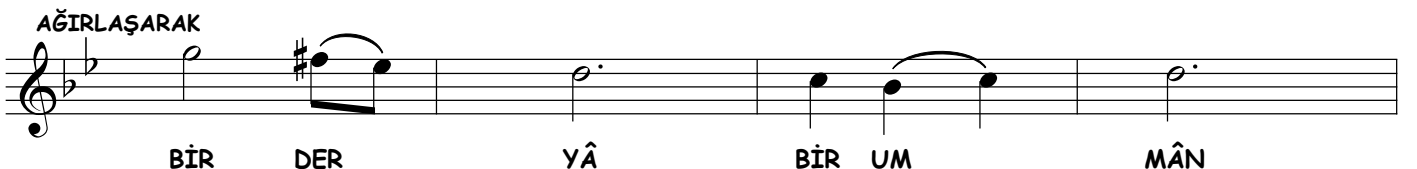
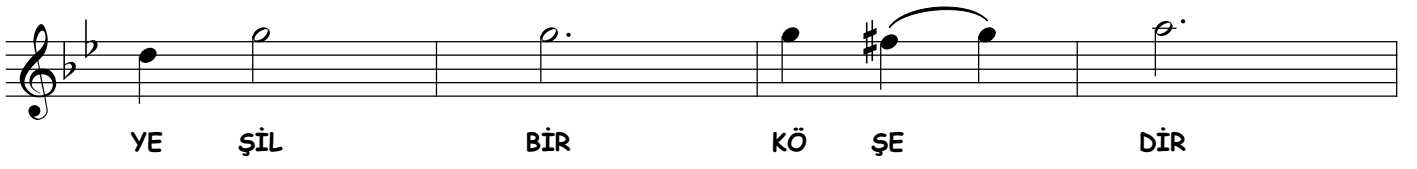
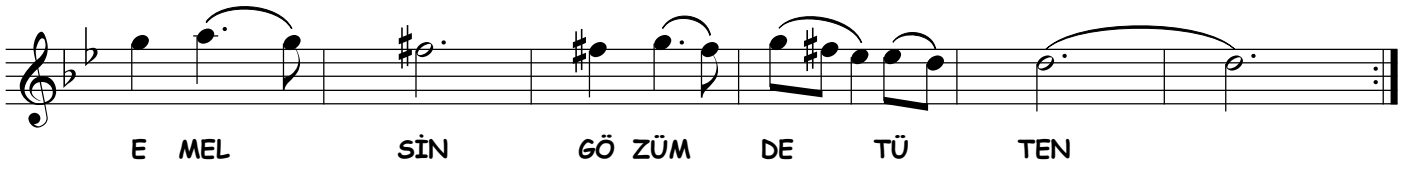
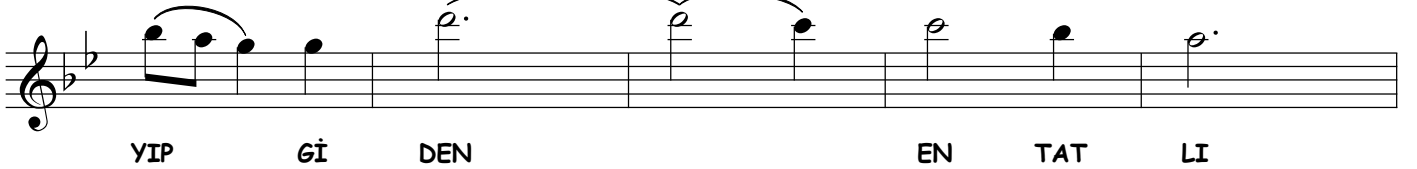
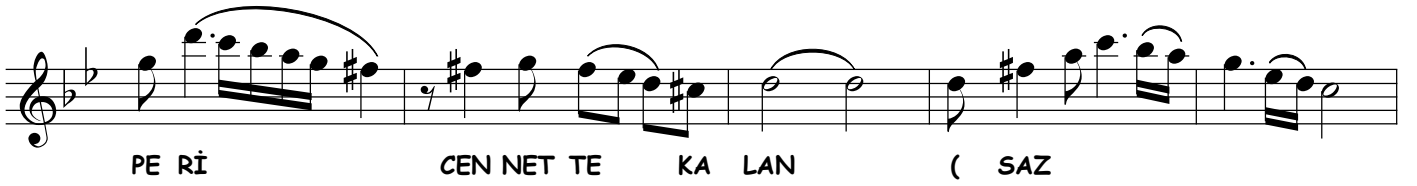
USÛLÜ : DÜYEK

BAHAR MELTEMİDİR BAŞIMDA ESEN

MÜZİK : EMİN ONGAN

SÖZ : KÂMURAN ÖZBİR





Birsen Kalender
SON

BAHAR MELTEMİDİR BAŞIMDA ESEN
İÇİMDE HÂTIRAN GÖZLERİMDE SEN
SEN TATLI ŞARKISIN DUDAKTA HER AN
BİR İSİMSİZ PERİ CENNETTE KALAN

SEN YEŞİL BİR DENİZ UZAYIP GİDEN
EN TATLI EMELSİN GÖZÜMDE TÜTEN
YEŞİL BİR KÖŞEDİR İÇİMDE YERİN
BİR DERYA BİR UMMAN YEŞİL GÖZLERİN