

DÜYEK

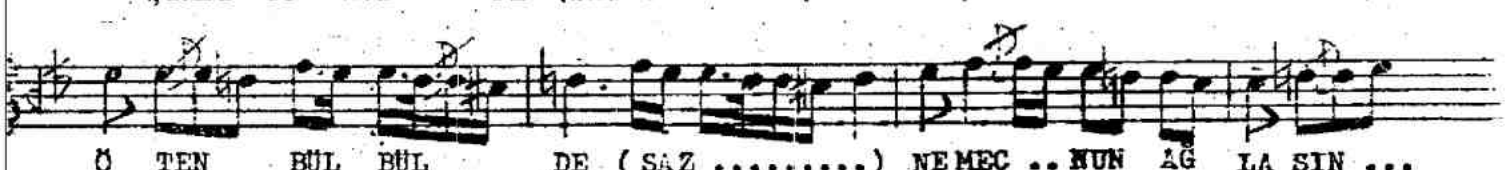
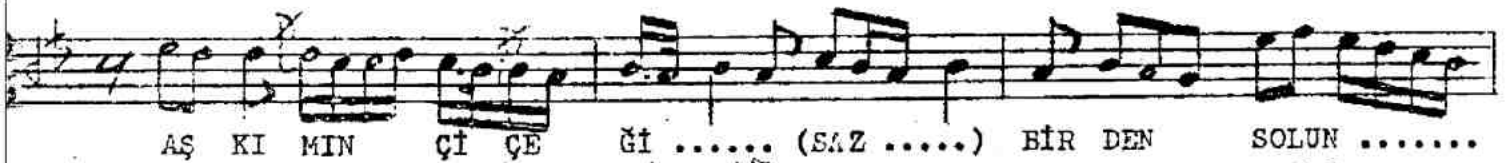
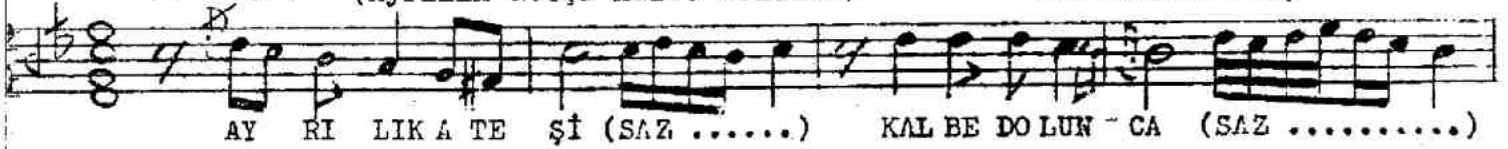
SABA ŞARKI

SÖ: MUSTAFA SEVİLEN

(♩ = 138)

(Ayrılık ateşi kalbe dolunca)

Müzik: AMİR ATEŞ



AYRILIK ATEŞİ KALBE DOLUNCA  
 AŞKIMIN ÇİÇEĞİ BİR DEN SOLUNCA  
 İSTEMEM CENNETİ VERSELER BİLE  
 GÜL AÇAR BAĞÇELER SENSİZ OLUNCA