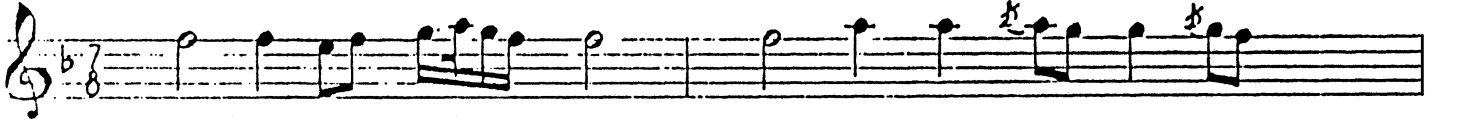


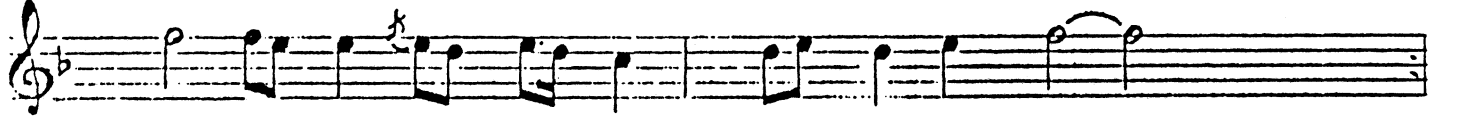
ACEMAŞİRAN İLÂHÎ

Güfte: Ali Ulvi Kurucu
Beste: Zeki Altun

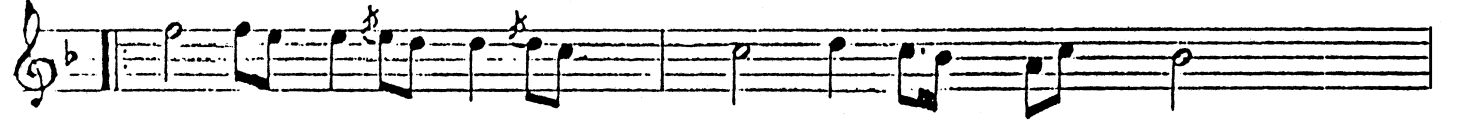
Devr-i Hindî



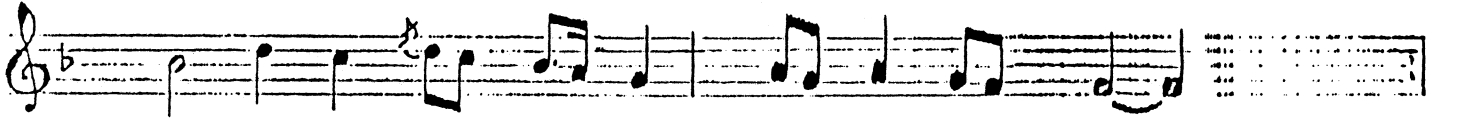
YÂ RA SÛ LÂL LAH A CEP KİM



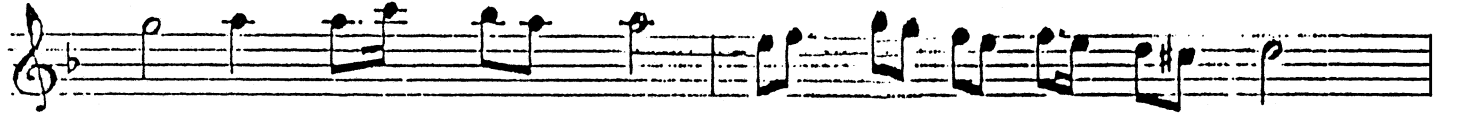
DİR Bİ ZE SEN DEN YA KİN



YÂ HA BÎ BAL LAH SE Nİ BİL



DİK ŞE Fİ ÂL MÜZ Nİ BİN



BİZ SA NA ÜM MET O LUN CA



EY LE RİZ GAY Rİ E MİN



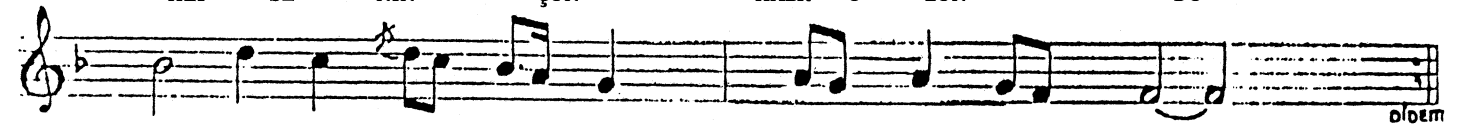
BİZ SA NA ÜM MET O LUN CA



EY LE RİZ GAY Rİ E MİN



ES SA LÂ TÜ VES SE LÂM EY
HEP SE NİN ÇÜN HÂLK O LUN DU



RAH ME TEN LİL Â LE MİN
BU SE MÂ VÂ TÜ ZE MİN

Yaresülellâh acep kimdir bize senden yakın
Ya habiballah seni bildik şerîal müznibin
Biz sana ümmet olunca eyleriz gâyri emin
Essâlâtü vesselâm ey rahmeten lîlâlemin
Hepseningün hâlk olundu bu semâvâtü zemin