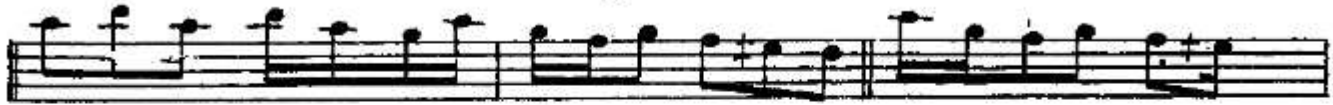


SAZ SEMÂISI

1. CI HÂNE

K. Hicokâr

FENNI B.



TEŞVÎT




2. CI HÂNE



3 : CI HANE

The first section, titled "3 : CI HANE", consists of three staves of music. The first staff begins with a treble clef and a key signature of one flat (B-flat). The melody is written in a 3/4 time signature. The second and third staves continue the melodic line, with various rhythmic values and accidentals (flats) used throughout. The notation includes eighth and quarter notes, rests, and bar lines.

 4 : CI HANE YALS

The second section, titled "4 : CI HANE YALS", begins with a treble clef and a key signature of one flat. The time signature changes to 4/8. The first staff of this section includes a double bar line and a key signature change to two flats (B-flat and E-flat). The subsequent six staves continue the melodic development with complex rhythmic patterns, including eighth and sixteenth notes, and various rests. The section concludes with a double bar line and a decorative flourish symbol.